

## Anti-OR51B5 antibody (170-250 Internal) (STJ94725)

STJ94725

### GENERAL INFORMATION

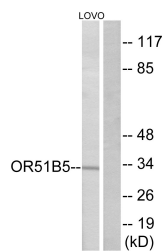
<b>Product Type</b>	Primary antibodies
<b>Short Description</b>	Rabbit polyclonal antibody anti-Olfactory Receptor 51b5 (170-250 Internal) is suitable for use in Western Blot, Immunofluorescence, Immunocytochemistry and ELISA research applications.
<b>Applications</b>	WB, IF, ICC, ELISA
<b>Host/Source</b>	Rabbit
<b>Reactivity</b>	Human, Rat, Mouse

### PRODUCT PROPERTIES

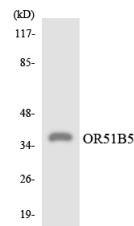
<b>Clonality</b>	Polyclonal
<b>Clone ID</b>	
<b>Concentration</b>	1 mg/mL
<b>Conjugation</b>	Unconjugated
<b>Purification</b>	The antibody was affinity-purified from rabbit anti-serum by affinity-chromatography.
<b>Dilution Range</b>	WB 1:500-1:2000 IF 1:200-1:1000 ELISA 1:20000
<b>Formulation</b>	PBS, 50% Glycerol, 0.5% BSA and 0.02% Sodium Azide.
<b>Isotype</b>	IgG
<b>Storage Instruction</b>	Store at -20°C for up to 1 year from the date of receipt, and avoid repeat freeze-thaw cycles.

### TARGET INFORMATION

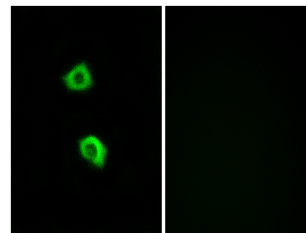
<b>Gene ID</b>	282763
<b>Gene Symbol</b>	OR51B5
<b>Uniprot ID</b>	O51B5_HUMAN
<b>Immunogen</b>	The antiserum was produced against synthesized peptide derived from human OR51B5 at amino acid range 200-249
<b>Immunogen Region</b>	170-250 Internal
<b>Specificity</b>	OR51B5 polyclonal antibody (Olfactory Receptor 51b5) binds to endogenous Olfactory Receptor 51b5 at the amino acid region 170-250 Internal.
<b>Immunogen Sequence</b>	



Western blot analysis of lysates from LOVO cells, using OR51B5 Antibody. The lane on the right is blocked with the synthesized peptide.



Western blot analysis of the lysates from HepG2 cells using OR51B5 antibody.



Immunofluorescence analysis of LOVO cells, using OR51B5 Antibody. The picture on the right is blocked with the synthesized peptide.