

## Anti-OR4P4 antibody (230-310 C-Term) (STJ94718)

STJ94718

### GENERAL INFORMATION

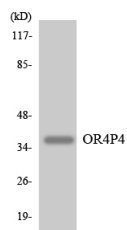
<b>Product Type</b>	Primary antibodies
<b>Short Description</b>	Rabbit polyclonal antibody anti-Olfactory Receptor 4p4 (230-310 C-Term) is suitable for use in Western Blot, Immunofluorescence, Immunocytochemistry and ELISA research applications.
<b>Applications</b>	WB, IF, ICC, ELISA
<b>Host/Source</b>	Rabbit
<b>Reactivity</b>	Human, Rat, Mouse

### PRODUCT PROPERTIES

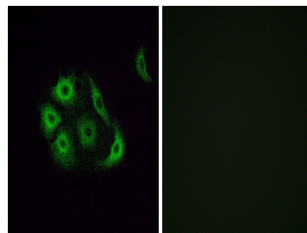
<b>Clonality</b>	Polyclonal
<b>Clone ID</b>	
<b>Concentration</b>	1 mg/mL
<b>Conjugation</b>	Unconjugated
<b>Purification</b>	The antibody was affinity-purified from rabbit anti-serum by affinity-chromatography.
<b>Dilution Range</b>	WB 1:500-1:2000 IF 1:200-1:1000 ELISA 1:20000
<b>Formulation</b>	PBS, 50% Glycerol, 0.5% BSA and 0.02% Sodium Azide.
<b>Isotype</b>	IgG
<b>Storage Instruction</b>	Store at -20°C for up to 1 year from the date of receipt, and avoid repeat freeze-thaw cycles.

### TARGET INFORMATION

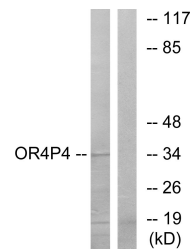
<b>Gene ID</b>	81300
<b>Gene Symbol</b>	OR4P4
<b>Uniprot ID</b>	OR4P4_HUMAN
<b>Immunogen</b>	The antiserum was produced against synthesized peptide derived from human OR4P4 at amino acid range 260-309
<b>Immunogen Region</b>	230-310 C-Term
<b>Specificity</b>	OR4P4 polyclonal antibody (Olfactory Receptor 4p4) binds to endogenous Olfactory Receptor 4p4 at the amino acid region 230-310 C-Term.
<b>Immunogen Sequence</b>	



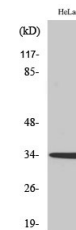
Western blot analysis of the lysates from COLO205 cells using OR4P4 antibody.



Immunofluorescence analysis of A549 cells, using OR4P4 Antibody. The picture on the right is blocked with the synthesized peptide.



Western blot analysis of lysates from HeLa cells, using OR4P4 Antibody. The lane on the right is blocked with the synthesized peptide.



Western blot analysis of various cells using Olfactory receptor 4P4 Polyclonal Antibody