

## Anti-OR4K14 antibody (230-310 C-Term) (STJ94712)

STJ94712

### GENERAL INFORMATION

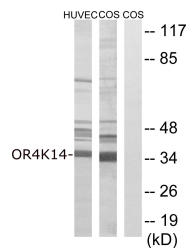
<b>Product Type</b>	Primary antibodies
<b>Short Description</b>	Rabbit polyclonal antibody anti-Olfactory Receptor 4k14 (230-310 C-Term) is suitable for use in Western Blot and ELISA research applications.
<b>Applications</b>	WB, ELISA
<b>Host/Source</b>	Rabbit
<b>Reactivity</b>	Human, Monkey

### PRODUCT PROPERTIES

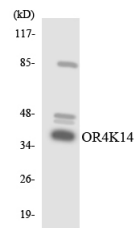
<b>Clonality</b>	Polyclonal
<b>Clone ID</b>	
<b>Concentration</b>	1 mg/mL
<b>Conjugation</b>	Unconjugated
<b>Purification</b>	The antibody was affinity-purified from rabbit anti-serum by affinity-chromatography.
<b>Dilution Range</b>	WB 1:500-1:2000 ELISA 1:10000
<b>Formulation</b>	PBS, 50% Glycerol, 0.5% BSA and 0.02% Sodium Azide.
<b>Isotype</b>	IgG
<b>Storage Instruction</b>	Store at -20°C for up to 1 year from the date of receipt, and avoid repeat freeze-thaw cycles.

### TARGET INFORMATION

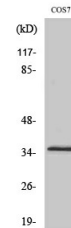
<b>Gene ID</b>	122740
<b>Gene Symbol</b>	OR4K14
<b>Uniprot ID</b>	OR4KE_HUMAN
<b>Immunogen</b>	The antiserum was produced against synthesized peptide derived from human OR4K14 at amino acid range 261-310
<b>Immunogen Region</b>	230-310 C-Term
<b>Specificity</b>	OR4K14 polyclonal antibody (Olfactory Receptor 4k14) binds to endogenous Olfactory Receptor 4k14 at the amino acid region 230-310 C-Term.
<b>Immunogen Sequence</b>	



Western blot analysis of lysates from COS7 and HUVEC cells using OR4K14 Antibody. The lane on the right is blocked with the synthesized peptide.



Western blot analysis of the lysates from COLO205 cells using OR4K14 antibody.



Western blot analysis of various cells using Olfactory receptor 4K14 Polyclonal Antibody diluted at 1: 2000.

This product is suitable for in-vitro studies under the RESEARCH USE ONLY [RUO] licence. This product must not be used as for diagnostic or other medical purposes.  
St John's Laboratory Ltd, Knowledge Dock Business Centre, University Way, London, E16 2RD | Tel: 0208 223 3081