

Anti-OR4F4 antibody (220-300 C-Term) (STJ94708)

STJ94708

GENERAL INFORMATION

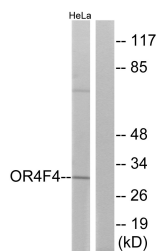
Product Type	Primary antibodies
Short Description	Rabbit polyclonal antibody anti-Olfactory Receptor 4f4 (220-300 C-Term) is suitable for use in Western Blot, Immunofluorescence, Immunocytochemistry and ELISA research applications.
Applications	WB, IF, ICC, ELISA
Host/Source	Rabbit
Reactivity	Human, Rat, Mouse

PRODUCT PROPERTIES

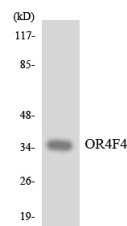
Clonality	Polyclonal
Clone ID	
Concentration	1 mg/mL
Conjugation	Unconjugated
Purification	The antibody was affinity-purified from rabbit anti-serum by affinity-chromatography.
Dilution Range	WB 1:500-1:2000 IF 1:200-1:1000 ELISA 1:20000
Formulation	PBS, 50% Glycerol, 0.5% BSA and 0.02% Sodium Azide.
Isotype	IgG
Storage Instruction	Store at -20°C for up to 1 year from the date of receipt, and avoid repeat freeze-thaw cycles.

TARGET INFORMATION

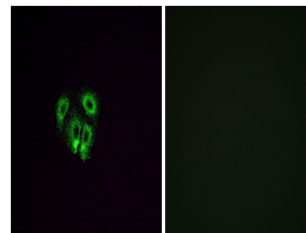
Gene ID	26682
Gene Symbol	OR4F4
Uniprot ID	OR4F4_HUMAN
Immunogen	The antiserum was produced against synthesized peptide derived from human OR4F4 at amino acid range 256-305
Immunogen Region	220-300 C-Term
Specificity	OR4F4 polyclonal antibody (Olfactory Receptor 4f4) binds to endogenous Olfactory Receptor 4f4 at the amino acid region 220-300 C-Term.
Immunogen Sequence	



Western blot analysis of lysates from HeLa cells, using OR4F4 Antibody. The lane on the right is blocked with the synthesized peptide.



Western blot analysis of the lysates from HeLa cells using OR4F4 antibody.



Immunofluorescence analysis of A549 cells, using OR4F4 Antibody. The picture on the right is blocked with the synthesized peptide.