

Anti-OR4D6 antibody (230-310 C-Term) (STJ94706)

STJ94706

GENERAL INFORMATION

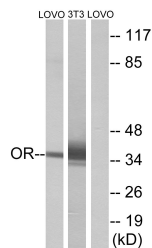
Product Type	Primary antibodies
Short Description	Rabbit polyclonal antibody anti-Olfactory Receptor 4d6 (230-310 C-Term) is suitable for use in Western Blot and ELISA research applications.
Applications	WB, ELISA
Host/Source	Rabbit
Reactivity	Human, Rat, Mouse

PRODUCT PROPERTIES

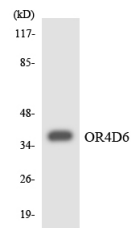
Clonality	Polyclonal
Clone ID	
Concentration	1 mg/mL
Conjugation	Unconjugated
Purification	The antibody was affinity-purified from rabbit anti-serum by affinity-chromatography.
Dilution Range	WB 1:500-1:2000 ELISA 1:20000
Formulation	PBS, 50% Glycerol, 0.5% BSA and 0.02% Sodium Azide.
Isotype	IgG
Storage Instruction	Store at -20°C for up to 1 year from the date of receipt, and avoid repeat freeze-thaw cycles.

TARGET INFORMATION

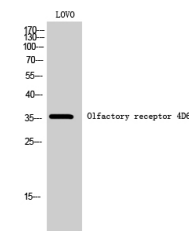
Gene ID	219983
Gene Symbol	OR4D6
Uniprot ID	OR4D6_HUMAN
Immunogen	The antiserum was produced against synthesized peptide derived from human OR4D6 at amino acid range 260-309
Immunogen Region	230-310 C-Term
Specificity	OR4D6 polyclonal antibody (Olfactory Receptor 4d6) binds to endogenous Olfactory Receptor 4d6 at the amino acid region 230-310 C-Term.
Immunogen Sequence	



Western blot analysis of lysates from LOVO and NIH/3T3 cells, using OR4D6 Antibody. The lane on the right is blocked with the synthesized peptide.



Western blot analysis of the lysates from HT-29 cells using OR4D6 antibody.



Western blot analysis of LOVO cells using Olfactory receptor 4D6 Polyclonal Antibody

This product is suitable for in-vitro studies under the RESEARCH USE ONLY [RUO] licence. This product must not be used as for diagnostic or other medical purposes.
St John's Laboratory Ltd, Knowledge Dock Business Centre, University Way, London, E16 2RD | Tel: 0208 223 3081