

## Anti-OR4C6 antibody (170-250 Internal) (STJ94704)

STJ94704

### GENERAL INFORMATION

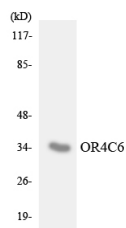
<b>Product Type</b>	Primary antibodies
<b>Short Description</b>	Rabbit polyclonal antibody anti-Olfactory Receptor 4c6 (170-250 Internal) is suitable for use in Western Blot, Immunofluorescence, Immunocytochemistry and ELISA research applications.
<b>Applications</b>	WB, IF, ICC, ELISA
<b>Host/Source</b>	Rabbit
<b>Reactivity</b>	Human, Rat, Mouse

### PRODUCT PROPERTIES

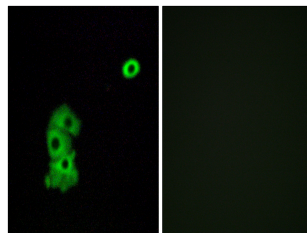
<b>Clonality</b>	Polyclonal
<b>Clone ID</b>	
<b>Concentration</b>	1 mg/mL
<b>Conjugation</b>	Unconjugated
<b>Purification</b>	The antibody was affinity-purified from rabbit anti-serum by affinity-chromatography.
<b>Dilution Range</b>	WB 1:500-1:2000 IF 1:200-1:1000 ELISA 1:40000
<b>Formulation</b>	PBS, 50% Glycerol, 0.5% BSA and 0.02% Sodium Azide.
<b>Isotype</b>	IgG
<b>Storage Instruction</b>	Store at -20°C for up to 1 year from the date of receipt, and avoid repeat freeze-thaw cycles.

### TARGET INFORMATION

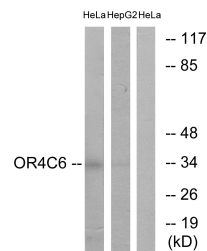
<b>Gene ID</b>	219432
<b>Gene Symbol</b>	OR4C6
<b>Uniprot ID</b>	OR4C6_HUMAN
<b>Immunogen</b>	The antiserum was produced against synthesized peptide derived from human OR4C6 at amino acid range 193-242
<b>Immunogen Region</b>	170-250 Internal
<b>Specificity</b>	OR4C6 polyclonal antibody (Olfactory Receptor 4c6) binds to endogenous Olfactory Receptor 4c6 at the amino acid region 170-250 Internal.
<b>Immunogen Sequence</b>	



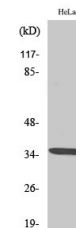
Western blot analysis of the lysates from HepG2 cells using OR4C6 antibody.



Immunofluorescence analysis of A549 cells, using OR4C6 Antibody. The picture on the right is blocked with the synthesized peptide.



Western blot analysis of lysates from HeLa and HepG2 cells, using OR4C6 Antibody. The lane on the right is blocked with the synthesized peptide.



Western blot analysis of various cells using Olfactory receptor 4C6 Polyclonal Antibody

This product is suitable for in-vitro studies under the RESEARCH USE ONLY [RUO] licence. This product must not be used as for diagnostic or other medical purposes.  
St John's Laboratory Ltd, Knowledge Dock Business Centre, University Way, London, E16 2RD | Tel: 0208 223 3081