

Anti-OR2W3 antibody (110-190 Internal) (STJ94690)

STJ94690

GENERAL INFORMATION

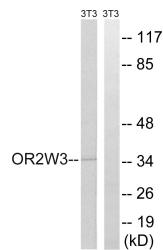
Product Type	Primary antibodies
Short Description	Rabbit polyclonal antibody anti-Olfactory Receptor 2w3 (110-190 Internal) is suitable for use in Western Blot and ELISA research applications.
Applications	WB, ELISA
Host/Source	Rabbit
Reactivity	Human, Rat, Mouse

PRODUCT PROPERTIES

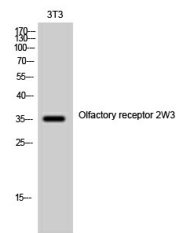
Clonality	Polyclonal
Clone ID	
Concentration	1 mg/mL
Conjugation	Unconjugated
Purification	The antibody was affinity-purified from rabbit anti-serum by affinity-chromatography.
Dilution Range	WB 1:500-1:2000 ELISA 1:10000
Formulation	PBS, 50% Glycerol, 0.5% BSA and 0.02% Sodium Azide.
Isotype	IgG
Storage Instruction	Store at -20°C for up to 1 year from the date of receipt, and avoid repeat freeze-thaw cycles.

TARGET INFORMATION

Gene ID	343171
Gene Symbol	OR2W3
Uniprot ID	OR2W3_HUMAN
Immunogen	The antiserum was produced against synthesized peptide derived from human OR2W3 at amino acid range 141-190
Immunogen Region	110-190 Internal
Specificity	OR2W3 polyclonal antibody (Olfactory Receptor 2w3) binds to endogenous Olfactory Receptor 2w3 at the amino acid region 110-190 Internal.
Immunogen Sequence	



Western blot analysis of lysates from NIH/3T3 cells, using OR2W3 Antibody. The lane on the right is blocked with the synthesized peptide.



Western blot analysis of 3T3 cells using Olfactory receptor 2W3 Polyclonal Antibody

This product is suitable for in-vitro studies under the RESEARCH USE ONLY [RUO] licence. This product must not be used as for diagnostic or other medical purposes.
St John's Laboratory Ltd, Knowledge Dock Business Centre, University Way, London, E16 2RD | Tel: 0208 223 3081