

Anti-OR2T1 antibody (200-280 C-Term) (STJ94682)

STJ94682

GENERAL INFORMATION

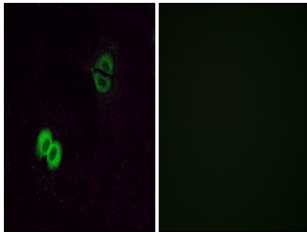
Product Type	Primary antibodies
Short Description	Rabbit polyclonal antibody anti-Olfactory Receptor 2t1 (200-280 C-Term) is suitable for use in Western Blot, Immunofluorescence, Immunocytochemistry and ELISA research applications.
Applications	WB, IF, ICC, ELISA
Host/Source	Rabbit
Reactivity	Human, Rat, Mouse

PRODUCT PROPERTIES

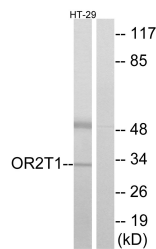
Clonality	Polyclonal
Clone ID	
Concentration	1 mg/mL
Conjugation	Unconjugated
Purification	The antibody was affinity-purified from rabbit anti-serum by affinity-chromatography.
Dilution Range	WB 1:500-1:2000 IF 1:200-1:1000 ELISA 1:10000
Formulation	PBS, 50% Glycerol, 0.5% BSA and 0.02% Sodium Azide.
Isotype	IgG
Storage Instruction	Store at -20°C for up to 1 year from the date of receipt, and avoid repeat freeze-thaw cycles.

TARGET INFORMATION

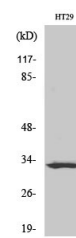
Gene ID	26696
Gene Symbol	OR2T1
Uniprot ID	OR2T1_HUMAN
Immunogen	The antiserum was produced against synthesized peptide derived from human OR2T1 at amino acid range 231-280
Immunogen Region	200-280 C-Term
Specificity	OR2T1 polyclonal antibody (Olfactory Receptor 2t1) binds to endogenous Olfactory Receptor 2t1 at the amino acid region 200-280 C-Term.
Immunogen Sequence	



Immunofluorescence analysis of A549 cells, using OR2T1 Antibody. The picture on the right is blocked with the synthesized peptide.



Western blot analysis of lysates from HT-29 cells, using OR2T1 Antibody. The lane on the right is blocked with the synthesized peptide.



Western blot analysis of various cells using Olfactory receptor 2T1 Polyclonal Antibody