

Anti-OR2F2 antibody (70-150 Internal) (STJ94670)

STJ94670

GENERAL INFORMATION

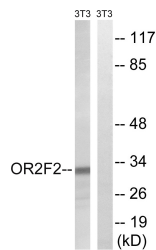
Product Type	Primary antibodies
Short Description	Rabbit polyclonal antibody anti-Olfactory Receptor 2f2 (70-150 Internal) is suitable for use in Western Blot and ELISA research applications.
Applications	WB, ELISA
Host/Source	Rabbit
Reactivity	Human, Rat, Mouse

PRODUCT PROPERTIES

Clonality	Polyclonal
Clone ID	
Concentration	1 mg/mL
Conjugation	Unconjugated
Purification	The antibody was affinity-purified from rabbit anti-serum by affinity-chromatography.
Dilution Range	WB 1:500-1:2000 ELISA 1:10000
Formulation	PBS, 50% Glycerol, 0.5% BSA and 0.02% Sodium Azide.
Isotype	IgG
Storage Instruction	Store at -20°C for up to 1 year from the date of receipt, and avoid repeat freeze-thaw cycles.

TARGET INFORMATION

Gene ID	135948
Gene Symbol	OR2F2
Uniprot ID	OR2F2_HUMAN
Immunogen	The antiserum was produced against synthesized peptide derived from human OR2F2 at amino acid range 93-142
Immunogen Region	70-150 Internal
Specificity	OR2F2 polyclonal antibody (Olfactory Receptor 2f2) binds to endogenous Olfactory Receptor 2f2 at the amino acid region 70-150 Internal.
Immunogen Sequence	



Western blot analysis of lysates from NIH/3T3 cells, using OR2F2 Antibody. The lane on the right is blocked with the synthesized peptide.

This product is suitable for in-vitro studies under the RESEARCH USE ONLY [RUO] licence. This product must not be used as for diagnostic or other medical purposes.
St John's Laboratory Ltd, Knowledge Dock Business Centre, University Way, London, E16 2RD | Tel: 0208 223 3081