

Anti-OR2C3 antibody (200-280 C-Term) (STJ94667)

STJ94667

GENERAL INFORMATION

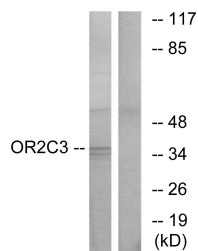
Product Type	Primary antibodies
Short Description	Rabbit polyclonal antibody anti-Olfactory Receptor 2c3 (200-280 C-Term) is suitable for use in Western Blot, Immunofluorescence, Immunocytochemistry and ELISA research applications.
Applications	WB, IF, ICC, ELISA
Host/Source	Rabbit
Reactivity	Human, Rat, Mouse

PRODUCT PROPERTIES

Clonality	Polyclonal
Clone ID	
Concentration	1 mg/mL
Conjugation	Unconjugated
Purification	The antibody was affinity-purified from rabbit anti-serum by affinity-chromatography.
Dilution Range	WB 1:500-1:2000 IF 1:200-1:1000 ELISA 1:10000
Formulation	PBS, 50% Glycerol, 0.5% BSA and 0.02% Sodium Azide.
Isotype	IgG
Storage Instruction	Store at -20°C for up to 1 year from the date of receipt, and avoid repeat freeze-thaw cycles.

TARGET INFORMATION

Gene ID	81472
Gene Symbol	OR2C3
Uniprot ID	OR2C3_HUMAN
Immunogen	The antiserum was produced against synthesized peptide derived from human OR2C3 at amino acid range 231-280
Immunogen Region	200-280 C-Term
Specificity	OR2C3 polyclonal antibody (Olfactory Receptor 2c3) binds to endogenous Olfactory Receptor 2c3 at the amino acid region 200-280 C-Term.
Immunogen Sequence	



Western blot analysis of lysates from COLO cells, using OR2C3 Antibody. The lane on the right is blocked with the synthesized peptide.