

Anti-OR2C1 antibody (210-290 C-Term) (STJ94666)

STJ94666

GENERAL INFORMATION

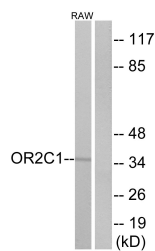
Product Type	Primary antibodies
Short Description	Rabbit polyclonal antibody anti-Olfactory Receptor 2c1 (210-290 C-Term) is suitable for use in Western Blot, Immunofluorescence, Immunocytochemistry and ELISA research applications.
Applications	WB, IF, ICC, ELISA
Host/Source	Rabbit
Reactivity	Human, Rat, Mouse

PRODUCT PROPERTIES

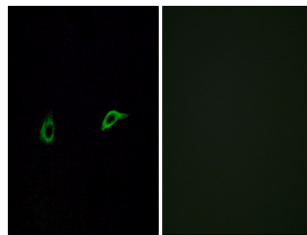
Clonality	Polyclonal
Clone ID	
Concentration	1 mg/mL
Conjugation	Unconjugated
Purification	The antibody was affinity-purified from rabbit anti-serum by affinity-chromatography.
Dilution Range	WB 1:500-1:2000 IF 1:200-1:1000 ELISA 1:20000
Formulation	PBS, 50% Glycerol, 0.5% BSA and 0.02% Sodium Azide.
Isotype	IgG
Storage Instruction	Store at -20°C for up to 1 year from the date of receipt, and avoid repeat freeze-thaw cycles.

TARGET INFORMATION

Gene ID	4993
Gene Symbol	OR2C1
Uniprot ID	OR2C1_HUMAN
Immunogen	The antiserum was produced against synthesized peptide derived from human OR2C1 at amino acid range 241-290
Immunogen Region	210-290 C-Term
Specificity	OR2C1 polyclonal antibody (Olfactory Receptor 2c1) binds to endogenous Olfactory Receptor 2c1 at the amino acid region 210-290 C-Term.
Immunogen Sequence	



Western blot analysis of lysates from RAW264.7 cells, using OR2C1 Antibody. The lane on the right is blocked with the synthesized peptide.



Immunofluorescence analysis of A549 cells, using OR2C1 Antibody. The picture on the right is blocked with the synthesized peptide.