

## Anti-OR2B8P antibody (30-110 Internal) (STJ94665)

STJ94665

### GENERAL INFORMATION

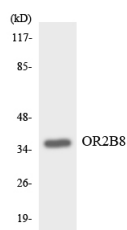
|                          |   |
|--------------------------|---|
| <b>Product Type</b>      | Primary antibodies  |
| <b>Short Description</b> | Rabbit polyclonal antibody anti-Putative Olfactory Receptor 2b8 (30-110 Internal) is suitable for use in Western Blot, Immunofluorescence, Immunocytochemistry and ELISA research applications. |
| <b>Applications</b>      | WB, IF, ICC, ELISA  |
| <b>Host/Source</b>       | Rabbit  |
| <b>Reactivity</b>        | Human, Rat, Mouse   |

### PRODUCT PROPERTIES

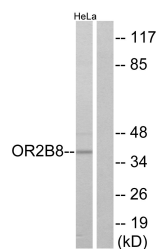
|                            |  |
|----------------------------|--|
| <b>Clonality</b>           | Polyclonal   |
| <b>Clone ID</b>            |  |
| <b>Concentration</b>       | 1 mg/mL  |
| <b>Conjugation</b>         | Unconjugated   |
| <b>Purification</b>        | The antibody was affinity-purified from rabbit anti-serum by affinity-chromatography.          |
| <b>Dilution Range</b>      | WB 1:500-1:2000<br>IF 1:200-1:1000<br>ELISA 1:20000  |
| <b>Formulation</b>         | PBS, 50% Glycerol, 0.5% BSA and 0.02% Sodium Azide.  |
| <b>Isotype</b>             | IgG  |
| <b>Storage Instruction</b> | Store at -20°C for up to 1 year from the date of receipt, and avoid repeat freeze-thaw cycles. |

### TARGET INFORMATION

|                           |  |
|---------------------------|--|
| <b>Gene ID</b>            | NA   |
| <b>Gene Symbol</b>        | <a href="#">OR2B8P</a>   |
| <b>Uniprot ID</b>         | <a href="#">OR2B8_HUMAN</a>  |
| <b>Immunogen</b>          | The antiserum was produced against synthesized peptide derived from human OR2B8 at amino acid range 61-110   |
| <b>Immunogen Region</b>   | 30-110 Internal  |
| <b>Specificity</b>        | OR2B8P polyclonal antibody (Putative Olfactory Receptor 2b8) binds to endogenous Putative Olfactory Receptor 2b8 at the amino acid region 30-110 Internal. |
| <b>Immunogen Sequence</b> |  |



Western blot analysis of the lysates from HT-29 cells using OR2B8 antibody.



Western blot analysis of lysates from HeLa cells, using OR2B8 Antibody. The lane on the right is blocked with the synthesized peptide.

This product is suitable for in-vitro studies under the RESEARCH USE ONLY [RUO] licence. This product must not be used as for diagnostic or other medical purposes.  
St John's Laboratory Ltd, Knowledge Dock Business Centre, University Way, London, E16 2RD | Tel: 0208 223 3081