

Anti-OR2B2 antibody (210-290 Internal) (STJ94664)

STJ94664

GENERAL INFORMATION

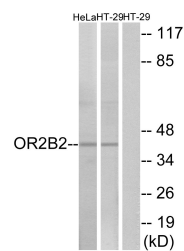
Product Type	Primary antibodies
Short Description	Rabbit polyclonal antibody anti-Olfactory Receptor 2b2 (210-290 Internal) is suitable for use in Western Blot, Immunofluorescence, Immunocytochemistry and ELISA research applications.
Applications	WB, IF, ICC, ELISA
Host/Source	Rabbit
Reactivity	Human, Rat, Mouse

PRODUCT PROPERTIES

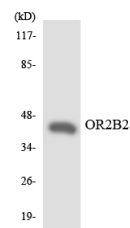
Clonality	Polyclonal
Clone ID	
Concentration	1 mg/mL
Conjugation	Unconjugated
Purification	The antibody was affinity-purified from rabbit anti-serum by affinity-chromatography.
Dilution Range	WB 1:500-1:2000 IF 1:200-1:1000 ELISA 1:10000
Formulation	PBS, 50% Glycerol, 0.5% BSA and 0.02% Sodium Azide.
Isotype	IgG
Storage Instruction	Store at -20°C for up to 1 year from the date of receipt, and avoid repeat freeze-thaw cycles.

TARGET INFORMATION

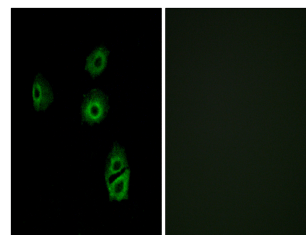
Gene ID	81697
Gene Symbol	OR2B2
Uniprot ID	OR2B2_HUMAN
Immunogen	The antiserum was produced against synthesized peptide derived from human OR2B2 at amino acid range 241-290
Immunogen Region	210-290 Internal
Specificity	OR2B2 polyclonal antibody (Olfactory Receptor 2b2) binds to endogenous Olfactory Receptor 2b2 at the amino acid region 210-290 Internal.
Immunogen Sequence	



Western blot analysis of lysates from HeLa and HT-29 cells, using OR2B2 Antibody. The lane on the right is blocked with the synthesized peptide.



Western blot analysis of the lysates from Jurkat cells using OR2B2 antibody.



Immunofluorescence analysis of A549 cells, using OR2B2 Antibody. The picture on the right is blocked with the synthesized peptide.