

Anti-Olfactory receptor 2AG1/2 antibody (30-110 Internal) (STJ94658)

STJ94658

GENERAL INFORMATION

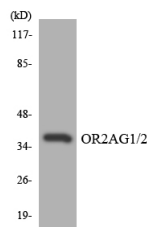
| | |
|--------------------------|---|
| Product Type | Primary antibodies |
| Short Description | Rabbit polyclonal antibody anti-Olfactory receptor 2AG2 and Olfactory receptor 2AG1 (30-110 Internal) is suitable for use in Western Blot, Immunofluorescence, Immunocytochemistry and ELISA research applications. |
| Applications | WB, IF, ICC, ELISA |
| Host/Source | Rabbit |
| Reactivity | Human, Rat, Mouse |

PRODUCT PROPERTIES

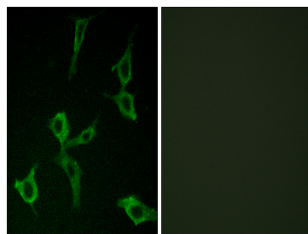
| | |
|----------------------------|--|
| Clonality | Polyclonal |
| Clone ID | |
| Concentration | 1 mg/mL |
| Conjugation | Unconjugated |
| Purification | The antibody was affinity-purified from rabbit anti-serum by affinity-chromatography. |
| Dilution Range | WB 1:500-1:2000 IF 1:200-1:1000 ELISA 1:5000 |
| Formulation | PBS, 50% Glycerol, 0.5% BSA and 0.02% Sodium Azide. |
| Isotype | IgG |
| Storage Instruction | Store at -20°C for up to 1 year from the date of receipt, and avoid repeat freeze-thaw cycles. |

TARGET INFORMATION

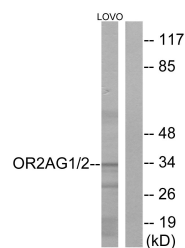
| | |
|---------------------------|---|
| Gene ID | 144125 338755 |
| Gene Symbol | OR2AG1 OR2AG2 |
| Uniprot ID | O2AG1_HUMAN O2AG2_HUMAN |
| Immunogen Region | The antiserum was produced against synthesized peptide derived from human OR2AG1/2AG2 at amino acid range 61-110 30-110 Internal |
| Specificity | Olfactory receptor 2AG1/2 polyclonal antibody (Olfactory receptor 2AG2 and Olfactory receptor 2AG1) binds to endogenous Olfactory receptor 2AG2 and Olfactory receptor 2AG1 at the amino acid region 30-110 Internal. |
| Immunogen Sequence | |



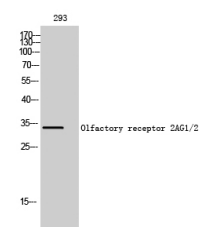
Western blot analysis of the lysates from HeLa cells using OR2AG1/2 antibody.



Immunofluorescence analysis of LOVO cells, using OR2AG1/2AG2 Antibody. The picture on the right is blocked with the synthesized peptide.



Western blot analysis of lysates from LOVO cells, using OR2AG1/2AG2 Antibody. The lane on the right is blocked with the synthesized peptide.



Western blot analysis of 293 cells using Olfactory receptor 2AG1/2 Polyclonal Antibody diluted at 1: 500

This product is suitable for in-vitro studies under the RESEARCH USE ONLY [RUO] licence. This product must not be used as for diagnostic or other medical purposes.
St John's Laboratory Ltd, Knowledge Dock Business Centre, University Way, London, E16 2RD | Tel: 0208 223 3081