

Anti-Olfactory receptor 2A5/14 antibody (210-290 C-Term) (STJ94656)

STJ94656

GENERAL INFORMATION

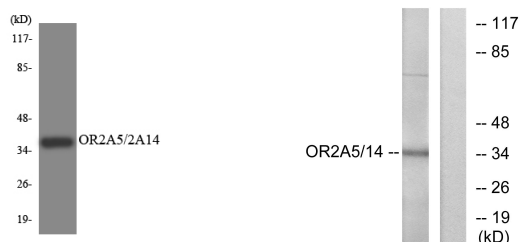
Product Type	Primary antibodies
Short Description	Rabbit polyclonal antibody anti-Olfactory receptor 2A14 and Olfactory receptor 2A5 (210-290 C-Term) is suitable for use in Western Blot, Immunofluorescence, Immunocytochemistry and ELISA research applications.
Applications	WB, IF, ICC, ELISA
Host/Source	Rabbit
Reactivity	Human, Rat, Mouse

PRODUCT PROPERTIES

Clonality	Polyclonal
Clone ID	
Concentration	1 mg/mL
Conjugation	Unconjugated
Purification	The antibody was affinity-purified from rabbit anti-serum by affinity-chromatography.
Dilution Range	WB 1:500-1:2000 IF 1:200-1:1000 ELISA 1:5000
Formulation	PBS, 50% Glycerol, 0.5% BSA and 0.02% Sodium Azide.
Isotype	IgG
Storage Instruction	Store at -20°C for up to 1 year from the date of receipt, and avoid repeat freeze-thaw cycles.

TARGET INFORMATION

Gene ID	135941 393046
Gene Symbol	OR2A14 OR2A5
Uniprot ID	O2A14_HUMAN OR2A5_HUMAN
Immunogen Region	The antiserum was produced against synthesized peptide derived from human OR2A5/2A14 at amino acid range 241-290 210-290 C-Term
Specificity	Olfactory receptor 2A5/14 polyclonal antibody (Olfactory receptor 2A14 and Olfactory receptor 2A5) binds to endogenous Olfactory receptor 2A14 and Olfactory receptor 2A5 at the amino acid region 210-290 C-Term.
Immunogen Sequence	



Western blot analysis of the lysates from COLO205 cells using OR2A5/2A14 antibody.

Western blot analysis of lysates from K562 cells, using OR2A5/2A14 Antibody. The lane on the right is blocked with the synthesized peptide.

This product is suitable for in-vitro studies under the RESEARCH USE ONLY [RUO] licence. This product must not be used as for diagnostic or other medical purposes.
St John's Laboratory Ltd, Knowledge Dock Business Centre, University Way, London, E16 2RD | Tel: 0208 223 3081