

Anti-OR2A1/OR2A42 antibody (210-290 C-Term) (STJ94655)

STJ94655

GENERAL INFORMATION

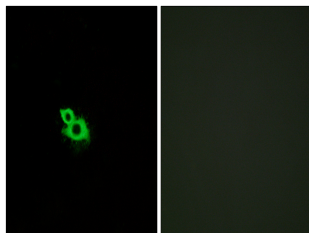
Product Type	Primary antibodies
Short Description	Rabbit polyclonal antibody anti-Olfactory Receptor 2a1/2a42 (210-290 C-Term) is suitable for use in Western Blot, Immunofluorescence, Immunocytochemistry and ELISA research applications.
Applications	WB, IF, ICC, ELISA
Host/Source	Rabbit
Reactivity	Human, Rat, Mouse

PRODUCT PROPERTIES

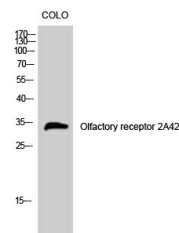
Clonality	Polyclonal
Clone ID	
Concentration	1 mg/mL
Conjugation	Unconjugated
Purification	The antibody was affinity-purified from rabbit anti-serum by affinity-chromatography.
Dilution Range	WB 1:500-1:2000 IF 1:200-1:1000 ELISA 1:5000
Formulation	PBS, 50% Glycerol, 0.5% BSA and 0.02% Sodium Azide.
Isotype	IgG
Storage Instruction	Store at -20°C for up to 1 year from the date of receipt, and avoid repeat freeze-thaw cycles.

TARGET INFORMATION

Gene ID	346528/402317
Gene Symbol	OR2A1.OR2A42
Uniprot ID	OR2A1_HUMAN
Immunogen	The antiserum was produced against synthesized peptide derived from human OR2A42 at amino acid range 241-290
Immunogen Region	210-290 C-Term
Specificity	OR2A1/OR2A42 polyclonal antibody (Olfactory Receptor 2a1/2a42) binds to endogenous Olfactory Receptor 2a1/2a42 at the amino acid region 210-290 C-Term.
Immunogen Sequence	



Immunofluorescence analysis of MCF7 cells, using OR2A42 Antibody. The picture on the right is blocked with the synthesized peptide.



Western blot analysis of COLO cells using Olfactory receptor 2A42 Polyclonal Antibody

This product is suitable for in-vitro studies under the RESEARCH USE ONLY [RUO] licence. This product must not be used as for diagnostic or other medical purposes.
St John's Laboratory Ltd, Knowledge Dock Business Centre, University Way, London, E16 2RD | Tel: 0208 223 3081