

## Anti-OR2A25 antibody (210-290 C-Term) (STJ94653)

STJ94653

### GENERAL INFORMATION

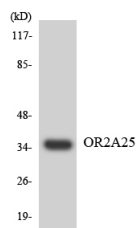
<b>Product Type</b>	Primary antibodies
<b>Short Description</b>	Rabbit polyclonal antibody anti-Olfactory Receptor 2a25 (210-290 C-Term) is suitable for use in Western Blot, Immunofluorescence, Immunocytochemistry and ELISA research applications.
<b>Applications</b>	WB, IF, ICC, ELISA
<b>Host/Source</b>	Rabbit
<b>Reactivity</b>	Human, Rat, Mouse

### PRODUCT PROPERTIES

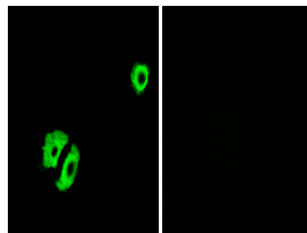
<b>Clonality</b>	Polyclonal
<b>Clone ID</b>	
<b>Concentration</b>	1 mg/mL
<b>Conjugation</b>	Unconjugated
<b>Purification</b>	The antibody was affinity-purified from rabbit anti-serum by affinity-chromatography.
<b>Dilution Range</b>	WB 1:500-1:2000 IF 1:200-1:1000 ELISA 1:5000
<b>Formulation</b>	PBS, 50% Glycerol, 0.5% BSA and 0.02% Sodium Azide.
<b>Isotype</b>	IgG
<b>Storage Instruction</b>	Store at -20°C for up to 1 year from the date of receipt, and avoid repeat freeze-thaw cycles.

### TARGET INFORMATION

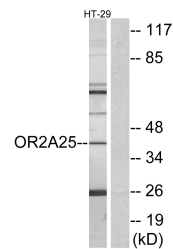
<b>Gene ID</b>	392138
<b>Gene Symbol</b>	OR2A25
<b>Uniprot ID</b>	O2A25_HUMAN
<b>Immunogen</b>	The antiserum was produced against synthesized peptide derived from human OR2A25 at amino acid range 241-290
<b>Immunogen Region</b>	210-290 C-Term
<b>Specificity</b>	OR2A25 polyclonal antibody (Olfactory Receptor 2a25) binds to endogenous Olfactory Receptor 2a25 at the amino acid region 210-290 C-Term.
<b>Immunogen Sequence</b>	



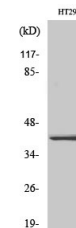
Western blot analysis of the lysates from HepG2 cells using OR2A25 antibody.



Immunofluorescence analysis of A549 cells, using OR2A25 Antibody. The picture on the right is blocked with the synthesized peptide.



Western blot analysis of lysates from HT-29 cells, using OR2A25 Antibody. The lane on the right is blocked with the synthesized peptide.



Western blot analysis of various cells using Olfactory receptor 2A25 Polyclonal Antibody