

## Anti-OR1N1 antibody (200-280 C-Term) (STJ94651)

STJ94651

### GENERAL INFORMATION

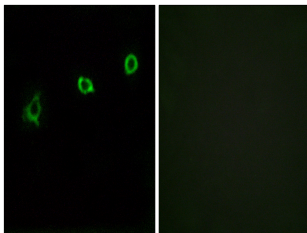
<b>Product Type</b>	Primary antibodies
<b>Short Description</b>	Rabbit polyclonal antibody anti-Olfactory Receptor 1n1 (200-280 C-Term) is suitable for use in Immunofluorescence, Immunocytochemistry and ELISA research applications.
<b>Applications</b>	IF, ICC, ELISA
<b>Host/Source</b>	Rabbit
<b>Reactivity</b>	Human, Rat, Mouse

### PRODUCT PROPERTIES

<b>Clonality</b>	Polyclonal
<b>Clone ID</b>	
<b>Concentration</b>	1 mg/mL
<b>Conjugation</b>	Unconjugated
<b>Purification</b>	The antibody was affinity-purified from rabbit anti-serum by affinity-chromatography.
<b>Dilution Range</b>	IF 1:200-1:1000 ELISA 1:10000
<b>Formulation</b>	PBS, 50% Glycerol, 0.5% BSA and 0.02% Sodium Azide.
<b>Isotype</b>	IgG
<b>Storage</b>	Store at -20°C for up to 1 year from the date of receipt, and avoid repeat freeze-thaw cycles.
<b>Instruction</b>	

### TARGET INFORMATION

<b>Gene ID</b>	138883
<b>Gene Symbol</b>	OR1N1
<b>Uniprot ID</b>	OR1N1_HUMAN
<b>Immunogen</b>	The antiserum was produced against synthesized peptide derived from human OR1N1 at amino acid range 231-280
<b>Immunogen Region</b>	200-280 C-Term
<b>Specificity</b>	OR1N1 polyclonal antibody (Olfactory Receptor 1n1) binds to endogenous Olfactory Receptor 1n1 at the amino acid region 200-280 C-Term.
<b>Immunogen Sequence</b>	



Immunofluorescence analysis of HUVEC cells, using OR1N1 Antibody. The picture on the right is blocked with the synthesized peptide.