

Anti-Olfactory receptor 1D4/1D5 antibody (170-250 Internal) (STJ94649)

STJ94649

GENERAL INFORMATION

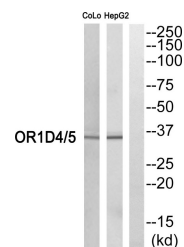
Product Type	Primary antibodies
Short Description	Rabbit polyclonal antibody anti-Olfactory receptor 1D4 and Olfactory receptor 1D5 (170-250 Internal) is suitable for use in Western Blot and ELISA research applications.
Applications	WB, ELISA
Host/Source	Rabbit
Reactivity	Human, Rat, Mouse

PRODUCT PROPERTIES

Clonality	Polyclonal
Clone ID	
Concentration	1 mg/mL
Conjugation	Unconjugated
Purification	The antibody was affinity-purified from rabbit anti-serum by affinity-chromatography.
Dilution	WB 1:500-1:2000
Range	ELISA 1:20000
Formulation	PBS, 50% Glycerol, 0.5% BSA and 0.02% Sodium Azide.
Isotype	IgG
Storage	Store at -20°C for up to 1 year from the date of receipt, and avoid repeat freeze-thaw cycles.
Instruction	

TARGET INFORMATION

Gene ID	NA
	8386
Gene Symbol	OR1D4
	OR1D5
Uniprot ID	OR1D4_HUMAN
	OR1D5_HUMAN
Immunogen	Synthesized peptide derived from Olfactory receptor 1D4/1D5. at amino acid range: 170-250
Immunogen Region	170-250 Internal
Specificity	Olfactory receptor 1D4/1D5 polyclonal antibody (Olfactory receptor 1D4 and Olfactory receptor 1D5) binds to endogenous Olfactory receptor 1D4 and Olfactory receptor 1D5 at the amino acid region 170-250 Internal.
Immunogen Sequence	



Western blot analysis of OR1D4/5 Antibody. The lane on the right is blocked with the OR1D4/5 peptide.

This product is suitable for in-vitro studies under the RESEARCH USE ONLY [RUO] licence. This product must not be used as for diagnostic or other medical purposes.
St John's Laboratory Ltd, Knowledge Dock Business Centre, University Way, London, E16 2RD | Tel: 0208 223 3081