

Anti-Olfactory receptor 1D4/1D5 antibody (170-250 Internal) (STJ94648)

STJ94648

GENERAL INFORMATION

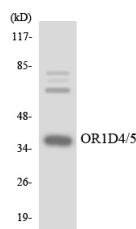
Product Type	Primary antibodies
Short Description	Rabbit polyclonal antibody anti-Olfactory receptor 1D5 and Olfactory receptor 1D4 (170-250 Internal) is suitable for use in Western Blot, Immunofluorescence, Immunocytochemistry and ELISA research applications.
Applications	WB, IF, ICC, ELISA
Host/Source	Rabbit
Reactivity	Human, Rat, Mouse

PRODUCT PROPERTIES

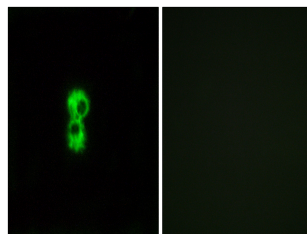
Clonality	Polyclonal
Clone ID	
Concentration	1 mg/mL
Conjugation	Unconjugated
Purification	The antibody was affinity-purified from rabbit anti-serum by affinity-chromatography.
Dilution Range	WB 1:500-1:2000 IF 1:200-1:1000 ELISA 1:20000
Formulation	PBS, 50% Glycerol, 0.5% BSA and 0.02% Sodium Azide.
Isotype	IgG
Storage Instruction	Store at -20°C for up to 1 year from the date of receipt, and avoid repeat freeze-thaw cycles.

TARGET INFORMATION

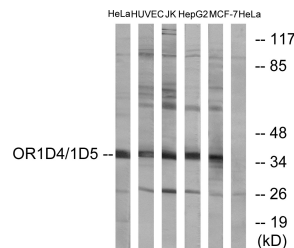
Gene ID	NA 8386
Gene Symbol	OR1D4 OR1D5
Uniprot ID	OR1D4_HUMAN OR1D5_HUMAN
Immunogen Region	The antiserum was produced against synthesized peptide derived from human OR1D4/5 at amino acid range 200-249 170-250 Internal
Specificity	Olfactory receptor 1D4/1D5 polyclonal antibody (Olfactory receptor 1D5 and Olfactory receptor 1D4) binds to endogenous Olfactory receptor 1D5 and Olfactory receptor 1D4 at the amino acid region 170-250 Internal.
Immunogen Sequence	



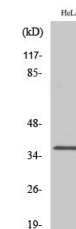
Western blot analysis of the lysates from K562 cells using OR1D4/5 antibody.



Immunofluorescence analysis of MCF7 cells, using OR1D4/5 Antibody. The picture on the right is blocked with the synthesized peptide.



Western blot analysis of lysates from HeLa, HUVEC, Jurkat, HepG2, and MCF-7 cells, using OR1D4/5 Antibody. The lane on the right is blocked with the synthesized peptide.



Western blot analysis of various cells using Olfactory receptor 1D4/1D5 Polyclonal Antibody diluted at 1:2000

This product is suitable for in-vitro studies under the RESEARCH USE ONLY [RUO] licence. This product must not be used as for diagnostic or other medical purposes.
St John's Laboratory Ltd, Knowledge Dock Business Centre, University Way, London, E16 2RD | Tel: 0208 223 3081