

Anti-OR1A1 antibody (230-310 C-Term) (STJ94645)

STJ94645

GENERAL INFORMATION

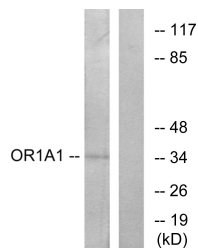
Product Type	Primary antibodies
Short Description	Rabbit polyclonal antibody anti-Olfactory Receptor 1a1 (230-310 C-Term) is suitable for use in Western Blot and ELISA research applications.
Applications	WB, ELISA
Host/Source	Rabbit
Reactivity	Human, Rat, Mouse

PRODUCT PROPERTIES

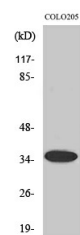
Clonality	Polyclonal
Clone ID	
Concentration	1 mg/mL
Conjugation	Unconjugated
Purification	The antibody was affinity-purified from rabbit anti-serum by affinity-chromatography.
Dilution Range	WB 1:500-1:2000 ELISA 1:20000
Formulation	PBS, 50% Glycerol, 0.5% BSA and 0.02% Sodium Azide.
Isotype	IgG
Storage Instruction	Store at -20°C for up to 1 year from the date of receipt, and avoid repeat freeze-thaw cycles.

TARGET INFORMATION

Gene ID	8383
Gene Symbol	OR1A1
Uniprot ID	OR1A1_HUMAN
Immunogen	The antiserum was produced against synthesized peptide derived from human OR1A1 at amino acid range 260-309
Immunogen Region	230-310 C-Term
Specificity	OR1A1 polyclonal antibody (Olfactory Receptor 1a1) binds to endogenous Olfactory Receptor 1a1 at the amino acid region 230-310 C-Term.
Immunogen Sequence	



Western blot analysis of lysates from COLO cells, using OR1A1 Antibody. The lane on the right is blocked with the synthesized peptide.



Western blot analysis of various cells using Olfactory receptor 1A1 Polyclonal Antibody