

Anti-OR13G1 antibody (210-290 C-Term) (STJ94643)

STJ94643

GENERAL INFORMATION

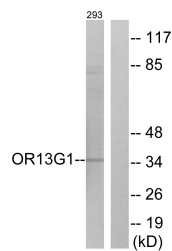
Product Type	Primary antibodies
Short Description	Rabbit polyclonal antibody anti-Olfactory Receptor 13g1 (210-290 C-Term) is suitable for use in Western Blot and ELISA research applications.
Applications	WB, ELISA
Host/Source	Rabbit
Reactivity	Human, Rat, Mouse

PRODUCT PROPERTIES

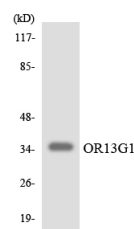
Clonality	Polyclonal
Clone ID	
Concentration	1 mg/mL
Conjugation	Unconjugated
Purification	The antibody was affinity-purified from rabbit anti-serum by affinity-chromatography.
Dilution Range	WB 1:500-1:2000 ELISA 1:20000
Formulation	PBS, 50% Glycerol, 0.5% BSA and 0.02% Sodium Azide.
Isotype	IgG
Storage Instruction	Store at -20°C for up to 1 year from the date of receipt, and avoid repeat freeze-thaw cycles.

TARGET INFORMATION

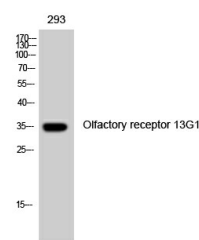
Gene ID	441933
Gene Symbol	OR13G1
Uniprot ID	O13G1_HUMAN
Immunogen	The antiserum was produced against synthesized peptide derived from human OR13G1 at amino acid range 241-290
Immunogen Region	210-290 C-Term
Specificity	OR13G1 polyclonal antibody (Olfactory Receptor 13g1) binds to endogenous Olfactory Receptor 13g1 at the amino acid region 210-290 C-Term.
Immunogen Sequence	



Western blot analysis of lysates from 293 cells, using OR13G1 Antibody. The lane on the right is blocked with the synthesized peptide.



Western blot analysis of the lysates from Jurkat cells using OR13G1 antibody.



Western blot analysis of 293 cells using Olfactory receptor 13G1 Polyclonal Antibody

This product is suitable for in-vitro studies under the RESEARCH USE ONLY [RUO] licence. This product must not be used as for diagnostic or other medical purposes.
St John's Laboratory Ltd, Knowledge Dock Business Centre, University Way, London, E16 2RD | Tel: 0208 223 3081