

Anti-OR13F1 antibody (210-290 C-Term) (STJ94642)

STJ94642

GENERAL INFORMATION

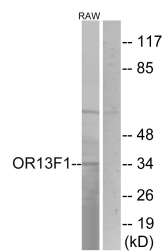
Product Type	Primary antibodies
Short Description	Rabbit polyclonal antibody anti-Olfactory Receptor 13f1 (210-290 C-Term) is suitable for use in Western Blot, Immunofluorescence, Immunocytochemistry and ELISA research applications.
Applications	WB, IF, ICC, ELISA
Host/Source	Rabbit
Reactivity	Human, Rat, Mouse

PRODUCT PROPERTIES

Clonality	Polyclonal
Clone ID	
Concentration	1 mg/mL
Conjugation	Unconjugated
Purification	The antibody was affinity-purified from rabbit anti-serum by affinity-chromatography.
Dilution Range	WB 1:500-1:2000 IF 1:200-1:1000 ELISA 1:20000
Formulation	PBS, 50% Glycerol, 0.5% BSA and 0.02% Sodium Azide.
Isotype	IgG
Storage Instruction	Store at -20°C for up to 1 year from the date of receipt, and avoid repeat freeze-thaw cycles.

TARGET INFORMATION

Gene ID	138805
Gene Symbol	OR13F1
Uniprot ID	O13F1_HUMAN
Immunogen	The antiserum was produced against synthesized peptide derived from human OR13F1 at amino acid range 241-290
Immunogen Region	210-290 C-Term
Specificity	OR13F1 polyclonal antibody (Olfactory Receptor 13f1) binds to endogenous Olfactory Receptor 13f1 at the amino acid region 210-290 C-Term.
Immunogen Sequence	



Western blot analysis of lysates from RAW264.7 cells, using OR13F1 Antibody. The lane on the right is blocked with the synthesized peptide.