

Anti-OR13D1 antibody (200-280 C-Term) (STJ94641)

STJ94641

GENERAL INFORMATION

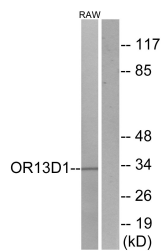
Product Type	Primary antibodies
Short Description	Rabbit polyclonal antibody anti-Olfactory Receptor 13d1 (200-280 C-Term) is suitable for use in Western Blot and ELISA research applications.
Applications	WB, ELISA
Host/Source	Rabbit
Reactivity	Human, Rat, Mouse

PRODUCT PROPERTIES

Clonality	Polyclonal
Clone ID	
Concentration	1 mg/mL
Conjugation	Unconjugated
Purification	The antibody was affinity-purified from rabbit anti-serum by affinity-chromatography.
Dilution Range	WB 1:500-1:2000 ELISA 1:20000
Formulation	PBS, 50% Glycerol, 0.5% BSA and 0.02% Sodium Azide.
Isotype	IgG
Storage Instruction	Store at -20°C for up to 1 year from the date of receipt, and avoid repeat freeze-thaw cycles.

TARGET INFORMATION

Gene ID	286365
Gene Symbol	OR13D1
Uniprot ID	O13D1_HUMAN
Immunogen	The antiserum was produced against synthesized peptide derived from human OR13D1 at amino acid range 231-280
Immunogen Region	200-280 C-Term
Specificity	OR13D1 polyclonal antibody (Olfactory Receptor 13d1) binds to endogenous Olfactory Receptor 13d1 at the amino acid region 200-280 C-Term.
Immunogen Sequence	



Western blot analysis of lysates from RAW264.7 cells, using OR13D1 Antibody. The lane on the right is blocked with the synthesized peptide.

This product is suitable for in-vitro studies under the RESEARCH USE ONLY [RUO] licence. This product must not be used as for diagnostic or other medical purposes.
St John's Laboratory Ltd, Knowledge Dock Business Centre, University Way, London, E16 2RD | Tel: 0208 223 3081