

Anti-OR13C3 antibody (180-260 Internal) (STJ94638)

STJ94638

GENERAL INFORMATION

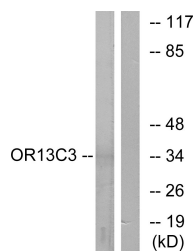
Product Type	Primary antibodies
Short Description	Rabbit polyclonal antibody anti-Olfactory Receptor 13c3 (180-260 Internal) is suitable for use in Western Blot, Immunofluorescence, Immunocytochemistry and ELISA research applications.
Applications	WB, IF, ICC, ELISA
Host/Source	Rabbit
Reactivity	Human, Rat, Mouse

PRODUCT PROPERTIES

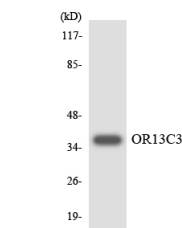
Clonality	Polyclonal
Clone ID	
Concentration	1 mg/mL
Conjugation	Unconjugated
Purification	The antibody was affinity-purified from rabbit anti-serum by affinity-chromatography.
Dilution Range	WB 1:500-1:2000 IF 1:200-1:1000 ELISA 1:10000
Formulation	PBS, 50% Glycerol, 0.5% BSA and 0.02% Sodium Azide.
Isotype	IgG
Storage Instruction	Store at -20°C for up to 1 year from the date of receipt, and avoid repeat freeze-thaw cycles.

TARGET INFORMATION

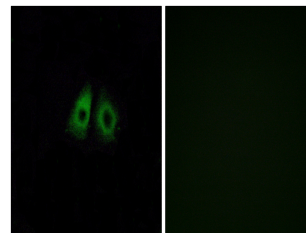
Gene ID	138803
Gene Symbol	OR13C3
Uniprot ID	O13C3_HUMAN
Immunogen	The antiserum was produced against synthesized peptide derived from human OR13C3 at amino acid range 201-250
Immunogen Region	180-260 Internal
Specificity	OR13C3 polyclonal antibody (Olfactory Receptor 13c3) binds to endogenous Olfactory Receptor 13c3 at the amino acid region 180-260 Internal.
Immunogen Sequence	



Western blot analysis of lysates from LOVO cells, using OR13C3 Antibody. The lane on the right is blocked with the synthesized peptide.



Western blot analysis of the lysates from HeLa cells using OR13C3 antibody.



Immunofluorescence analysis of A549 cells, using OR13C3 Antibody. The picture on the right is blocked with the synthesized peptide.