

## Anti-Olfactory receptor 10X1 antibody (180-260 C-Term) (STJ94632)

STJ94632

### GENERAL INFORMATION

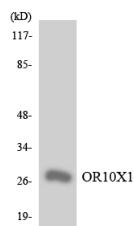
|                          |   |
|--------------------------|---|
| <b>Product Type</b>      | Primary antibodies  |
| <b>Short Description</b> | Rabbit polyclonal antibody anti-Olfactory receptor 10X1 and Olfactory receptor (180-260 C-Term) is suitable for use in Western Blot, Immunofluorescence, Immunocytochemistry and ELISA research applications. |
| <b>Applications</b>      | WB, IF, ICC, ELISA  |
| <b>Host/Source</b>       | Rabbit  |
| <b>Reactivity</b>        | Human, Rat, Mouse   |

### PRODUCT PROPERTIES

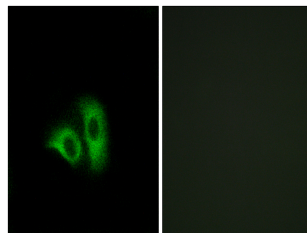
|                            |  |
|----------------------------|--|
| <b>Clonality</b>           | Polyclonal   |
| <b>Clone ID</b>            |  |
| <b>Concentration</b>       | 1 mg/mL  |
| <b>Conjugation</b>         | Unconjugated   |
| <b>Purification</b>        | The antibody was affinity-purified from rabbit anti-serum by affinity-chromatography.          |
| <b>Dilution</b>            | WB 1:500-1:2000  |
| <b>Range</b>               | IF 1:200-1:1000<br>ELISA 1:40000   |
| <b>Formulation</b>         | PBS, 50% Glycerol, 0.5% BSA and 0.02% Sodium Azide.  |
| <b>Isotype</b>             | IgG  |
| <b>Storage Instruction</b> | Store at -20°C for up to 1 year from the date of receipt, and avoid repeat freeze-thaw cycles. |

### TARGET INFORMATION

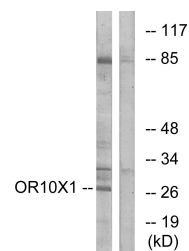
|                           |  |
|---------------------------|--|
| <b>Gene ID</b>            | 128367   |
| <b>Gene Symbol</b>        | OR10X1   |
| <b>Uniprot ID</b>         | O10X1_HUMAN  |
| <b>Immunogen</b>          | The antiserum was produced against synthesized peptide derived from human OR10X1 at amino acid range 216-265   |
| <b>Immunogen Region</b>   | 180-260 C-Term   |
| <b>Specificity</b>        | Olfactory receptor 10X1 polyclonal antibody (Olfactory receptor 10X1 and Olfactory receptor) binds to endogenous Olfactory receptor 10X1 and Olfactory receptor at the amino acid region 180-260 C-Term. |
| <b>Immunogen Sequence</b> |  |



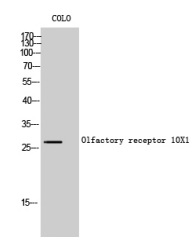
Western blot analysis of the lysates from Jurkat cells using OR10X1 antibody.



Immunofluorescence analysis of A549 cells, using OR10X1 Antibody. The picture on the right is blocked with the synthesized peptide.



Western blot analysis of lysates from COLO cells, using OR10X1 Antibody. The lane on the right is blocked with the synthesized peptide.



Western blot analysis of COLO cells using Olfactory receptor 10X1 Polyclonal Antibody

This product is suitable for in-vitro studies under the RESEARCH USE ONLY [RUO] licence. This product must not be used as for diagnostic or other medical purposes.  
St John's Laboratory Ltd, Knowledge Dock Business Centre, University Way, London, E16 2RD | Tel: 0208 223 3081