

Anti-OR10T2 antibody (200-280 C-Term) (STJ94630)

STJ94630

GENERAL INFORMATION

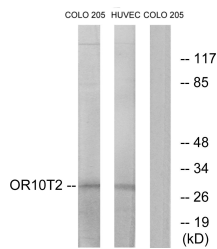
Product Type	Primary antibodies
Short Description	Rabbit polyclonal antibody anti-Olfactory Receptor 10t2 (200-280 C-Term) is suitable for use in Western Blot and ELISA research applications.
Applications	WB, ELISA
Host/Source	Rabbit
Reactivity	Human, Rat, Mouse

PRODUCT PROPERTIES

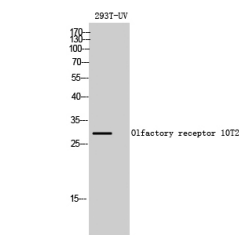
Clonality	Polyclonal
Clone ID	
Concentration	1 mg/mL
Conjugation	Unconjugated
Purification	The antibody was affinity-purified from rabbit anti-serum by affinity-chromatography.
Dilution Range	WB 1:500-1:2000 ELISA 1:20000
Formulation	PBS, 50% Glycerol, 0.5% BSA and 0.02% Sodium Azide.
Isotype	IgG
Storage Instruction	Store at -20°C for up to 1 year from the date of receipt, and avoid repeat freeze-thaw cycles.

TARGET INFORMATION

Gene ID	128360
Gene Symbol	OR10T2
Uniprot ID	O10T2_HUMAN
Immunogen	The antiserum was produced against synthesized peptide derived from human OR10T2 at amino acid range 231-280
Immunogen Region	200-280 C-Term
Specificity	OR10T2 polyclonal antibody (Olfactory Receptor 10t2) binds to endogenous Olfactory Receptor 10t2 at the amino acid region 200-280 C-Term.
Immunogen Sequence	



Western blot analysis of lysates from HUVEC and COLO cells, using OR10T2 Antibody. The lane on the right is blocked with the synthesized peptide.



Western blot analysis of 293T-UV cells using Olfactory receptor 10T2 Polyclonal Antibody diluted at 1: 500

This product is suitable for in-vitro studies under the RESEARCH USE ONLY [RUO] licence. This product must not be used as for diagnostic or other medical purposes.
St John's Laboratory Ltd, Knowledge Dock Business Centre, University Way, London, E16 2RD | Tel: 0208 223 3081