

## Anti-Olfactory receptor 10S1 antibody (180-260 Internal) (STJ94629)

STJ94629

### GENERAL INFORMATION

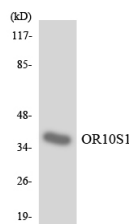
<b>Product Type</b>	Primary antibodies
<b>Short Description</b>	Rabbit polyclonal antibody anti-Olfactory receptor 10S1 and Olfactory receptor 10S1 (180-260 Internal) is suitable for use in Western Blot, Immunofluorescence, Immunocytochemistry and ELISA research applications.
<b>Applications</b>	WB, IF, ICC, ELISA
<b>Host/Source</b>	Rabbit
<b>Reactivity</b>	Human, Monkey

### PRODUCT PROPERTIES

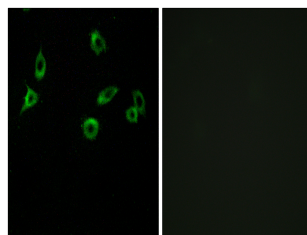
<b>Clonality</b>	Polyclonal
<b>Clone ID</b>	
<b>Concentration</b>	1 mg/mL
<b>Conjugation</b>	Unconjugated
<b>Purification</b>	The antibody was affinity-purified from rabbit anti-serum by affinity-chromatography.
<b>Dilution</b>	WB 1:500-1:2000
<b>Range</b>	IF 1:200-1:1000 ELISA 1:20000
<b>Formulation</b>	PBS, 50% Glycerol, 0.5% BSA and 0.02% Sodium Azide.
<b>Isotype</b>	IgG
<b>Storage Instruction</b>	Store at -20°C for up to 1 year from the date of receipt, and avoid repeat freeze-thaw cycles.

### TARGET INFORMATION

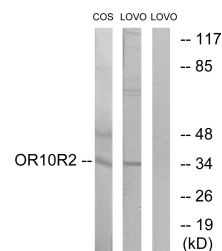
<b>Gene ID</b>	219873
<b>Gene Symbol</b>	OR10S1
<b>Uniprot ID</b>	O10S1_HUMAN
<b>Immunogen</b>	The antiserum was produced against synthesized peptide derived from human OR10S1 at amino acid range 213-262
<b>Immunogen Region</b>	180-260 Internal
<b>Specificity</b>	Olfactory receptor 10S1 polyclonal antibody (Olfactory receptor 10S1 and Olfactory receptor 10S1) binds to endogenous Olfactory receptor 10S1 and Olfactory receptor 10S1 at the amino acid region 180-260 Internal.
<b>Immunogen Sequence</b>	



Western blot analysis of the lysates from HepG2 cells using OR10S1 antibody.



Immunofluorescence analysis of MCF7 cells, using OR10S1 Antibody. The picture on the right is blocked with the synthesized peptide.



Western blot analysis of lysates from COS7 and LOVO cells, using OR10S1 Antibody. The lane on the right is blocked with the synthesized peptide.



Western blot analysis of various cells using Olfactory receptor 10S1 Polyclonal Antibody diluted at 1 : 2000

This product is suitable for in-vitro studies under the RESEARCH USE ONLY [RUO] licence. This product must not be used as for diagnostic or other medical purposes.  
St John's Laboratory Ltd, Knowledge Dock Business Centre, University Way, London, E16 2RD | Tel: 0208 223 3081