

Anti-OR10J6P antibody (200-280 C-Term) (STJ94626)

STJ94626

GENERAL INFORMATION

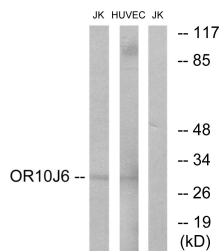
Product Type	Primary antibodies
Short Description	Rabbit polyclonal antibody anti-Putative Olfactory Receptor 10j6 (200-280 C-Term) is suitable for use in Western Blot, Immunofluorescence, Immunocytochemistry and ELISA research applications.
Applications	WB, IF, ICC, ELISA
Host/Source	Rabbit
Reactivity	Human, Rat, Mouse

PRODUCT PROPERTIES

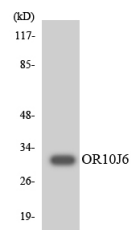
Clonality	Polyclonal
Clone ID	
Concentration	1 mg/mL
Conjugation	Unconjugated
Purification	The antibody was affinity-purified from rabbit anti-serum by affinity-chromatography.
Dilution Range	WB 1:500-1:2000 IF 1:200-1:1000 ELISA 1:40000
Formulation	PBS, 50% Glycerol, 0.5% BSA and 0.02% Sodium Azide.
Isotype	IgG
Storage Instruction	Store at -20°C for up to 1 year from the date of receipt, and avoid repeat freeze-thaw cycles.

TARGET INFORMATION

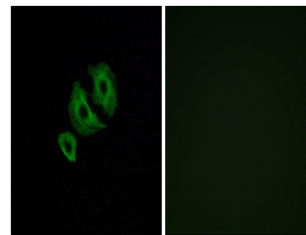
Gene ID	NA
Gene Symbol	OR10J6P
Uniprot ID	O10J6_HUMAN
Immunogen	The antiserum was produced against synthesized peptide derived from human OR10J6 at amino acid range 227-276
Immunogen Region	200-280 C-Term
Specificity	OR10J6P polyclonal antibody (Putative Olfactory Receptor 10j6) binds to endogenous Putative Olfactory Receptor 10j6 at the amino acid region 200-280 C-Term.
Immunogen Sequence	



Western blot analysis of lysates from Jurkat and HUVEC cells, using OR10J6 Antibody. The lane on the right is blocked with the synthesized peptide.



Western blot analysis of the lysates from COLO205 cells using OR10J6 antibody.



Immunofluorescence analysis of A549 cells, using OR10J6 Antibody. The picture on the right is blocked with the synthesized peptide.

This product is suitable for in-vitro studies under the RESEARCH USE ONLY [RUO] licence. This product must not be used as for diagnostic or other medical purposes.
St John's Laboratory Ltd, Knowledge Dock Business Centre, University Way, London, E16 2RD | Tel: 0208 223 3081