

Anti-OR10H2 antibody (210-290 C-Term) (STJ94620)

STJ94620

GENERAL INFORMATION

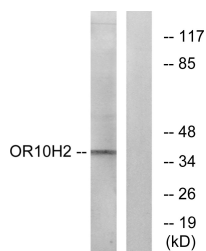
Product Type	Primary antibodies
Short Description	Rabbit polyclonal antibody anti-Olfactory Receptor 10h2 (210-290 C-Term) is suitable for use in Western Blot, Immunofluorescence, Immunocytochemistry and ELISA research applications.
Applications	WB, IF, ICC, ELISA
Host/Source	Rabbit
Reactivity	Human, Rat, Mouse

PRODUCT PROPERTIES

Clonality	Polyclonal
Clone ID	
Concentration	1 mg/mL
Conjugation	Unconjugated
Purification	The antibody was affinity-purified from rabbit anti-serum by affinity-chromatography.
Dilution Range	WB 1:500-1:2000 IF 1:200-1:1000 ELISA 1:5000
Formulation	PBS, 50% Glycerol, 0.5% BSA and 0.02% Sodium Azide.
Isotype	IgG
Storage Instruction	Store at -20°C for up to 1 year from the date of receipt, and avoid repeat freeze-thaw cycles.

TARGET INFORMATION

Gene ID	26538
Gene Symbol	OR10H2
Uniprot ID	O10H2_HUMAN
Immunogen	The antiserum was produced against synthesized peptide derived from human OR10H2 at amino acid range 241-290
Immunogen Region	210-290 C-Term
Specificity	OR10H2 polyclonal antibody (Olfactory Receptor 10h2) binds to endogenous Olfactory Receptor 10h2 at the amino acid region 210-290 C-Term.
Immunogen Sequence	



Western blot analysis of lysates from A549 cells, using OR10H2 Antibody. The lane on the right is blocked with the synthesized peptide.