

Anti-Olfactory receptor 10C1 antibody (30-110 Internal) (STJ94612)

STJ94612

GENERAL INFORMATION

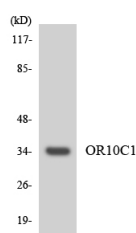
Product Type	Primary antibodies
Short Description	Rabbit polyclonal antibody anti-Olfactory receptor 10C1 and Olfactory receptor 10C1 (30-110 Internal) is suitable for use in Western Blot and ELISA research applications.
Applications	WB, ELISA
Host/Source	Rabbit
Reactivity	Human, Rat, Mouse

PRODUCT PROPERTIES

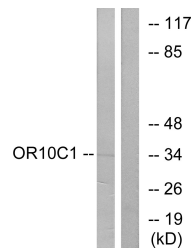
Clonality	Polyclonal
Clone ID	
Concentration	1 mg/mL
Conjugation	Unconjugated
Purification	The antibody was affinity-purified from rabbit anti-serum by affinity-chromatography.
Dilution	WB 1:500-1:2000
Range	ELISA 1:40000
Formulation	PBS, 50% Glycerol, 0.5% BSA and 0.02% Sodium Azide.
Isotype	IgG
Storage Instruction	Store at -20°C for up to 1 year from the date of receipt, and avoid repeat freeze-thaw cycles.

TARGET INFORMATION

Gene ID	442194
Gene Symbol	OR10C1
Uniprot ID	O10C1_HUMAN
Immunogen	The antiserum was produced against synthesized peptide derived from human OR10C1 at amino acid range 61-110
Immunogen Region	30-110 Internal
Specificity	Olfactory receptor 10C1 polyclonal antibody (Olfactory receptor 10C1 and Olfactory receptor 10C1) binds to endogenous Olfactory receptor 10C1 and Olfactory receptor 10C1 at the amino acid region 30-110 Internal.
Immunogen Sequence	



Western blot analysis of the lysates from HeLa cells using OR10C1 antibody.



Western blot analysis of lysates from LOVO cells, using OR10C1 Antibody. The lane on the right is blocked with the synthesized peptide.