

Anti-SLC22A5 antibody (270-350 Internal) (STJ94600)

STJ94600

GENERAL INFORMATION

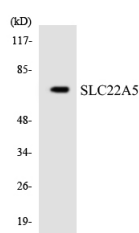
Product Type	Primary antibodies
Short Description	Rabbit polyclonal antibody anti-Solute Carrier Family 22 Member 5 (270-350 Internal) is suitable for use in Western Blot and ELISA research applications.
Applications	WB, ELISA
Host/Source	Rabbit
Reactivity	Human, Rat, Mouse

PRODUCT PROPERTIES

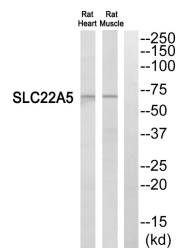
Clonality	Polyclonal
Clone ID	
Concentration	1 mg/mL
Conjugation	Unconjugated
Purification	The antibody was affinity-purified from rabbit anti-serum by affinity-chromatography.
Dilution Range	WB 1:500-1:2000 ELISA 1:20000
Formulation	PBS, 50% Glycerol, 0.5% BSA and 0.02% Sodium Azide.
Isotype	IgG
Storage Instruction	Store at -20°C for up to 1 year from the date of receipt, and avoid repeat freeze-thaw cycles.

TARGET INFORMATION

Gene ID	6584
Gene Symbol	SLC22A5
Uniprot ID	S22A5_HUMAN
Immunogen	The antiserum was produced against synthesized peptide derived from human SLC22A5 at amino acid range 300-349
Immunogen Region	270-350 Internal
Specificity	SLC22A5 polyclonal antibody (Solute Carrier Family 22 Member 5) binds to endogenous Solute Carrier Family 22 Member 5 at the amino acid region 270-350 Internal.
Immunogen Sequence	



Western blot analysis of the lysates from HeLa cells using SLC22A5 antibody.



Western blot analysis of SLC22A5 Antibody. The lane on the right is blocked with the SLC22A5 peptide.

This product is suitable for in-vitro studies under the RESEARCH USE ONLY [RUO] licence. This product must not be used as for diagnostic or other medical purposes.
St John's Laboratory Ltd, Knowledge Dock Business Centre, University Way, London, E16 2RD | Tel: 0208 223 3081