

Anti-POU5F1 antibody (160-240 Internal) (STJ94598)

STJ94598

GENERAL INFORMATION

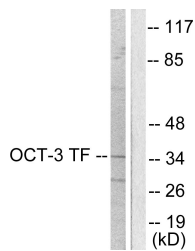
Product Type	Primary antibodies
Short Description	Rabbit polyclonal antibody anti-Pou Domain-Class 5-Transcription Factor 1 (160-240 Internal) is suitable for use in Western Blot, Immunohistochemistry, Immunofluorescence and ELISA research applications.
Applications	WB, IHC-P, IF-P, ELISA
Host/Source	Rabbit
Reactivity	Human, Mouse, Rat

PRODUCT PROPERTIES

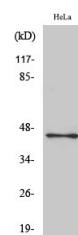
Clonality	Polyclonal
Clone ID	
Concentration	1 mg/mL
Conjugation	Unconjugated
Purification	The antibody was affinity-purified from rabbit anti-serum by affinity-chromatography.
Dilution Range	WB 1:500-1:2000 IHC 1:100-1:300 ELISA 1:10000
Formulation	PBS, 50% Glycerol, 0.5% BSA and 0.02% Sodium Azide.
Isotype	IgG
Storage Instruction	Store at 20°C for up to 1 year from the date of receipt, and avoid repeat freeze-thaw cycles.

TARGET INFORMATION

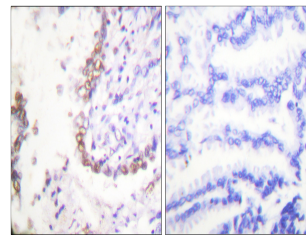
Gene ID	5460
Gene Symbol	POU5F1
Uniprot ID	PO5F1_HUMAN
Immunogen	The antiserum was produced against synthesized peptide derived from human OCT3 at amino acid range 191-240
Immunogen Region	160-240 Internal
Specificity	POU5F1 polyclonal antibody (Pou Domain-Class 5-Transcription Factor 1) binds to endogenous Pou Domain-Class 5-Transcription Factor 1 at the amino acid region 160-240 Internal.
Immunogen Sequence	



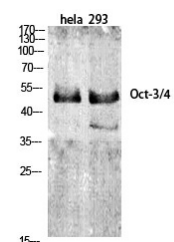
Western blot analysis of lysates from HeLa cells, using OCT3 Antibody. The lane on the right is blocked with the synthesized peptide.



Western blot analysis of HeLa cells using Oct-3/4 Polyclonal Antibody diluted at 1: 1000



Immunohistochemistry analysis of paraffin-embedded human lung carcinoma tissue, using OCT3 Antibody. The picture on the right is blocked with the synthesized peptide.



Western blot analysis of various cells using Oct-3/4 Polyclonal Antibody diluted at 1: 1000

This product is suitable for in-vitro studies under the RESEARCH USE ONLY [RUO] licence. This product must not be used as for diagnostic or other medical purposes.
St John's Laboratory Ltd, Knowledge Dock Business Centre, University Way, London, E16 2RD | Tel: 0208 223 3081