

Anti-POU2F1 antibody (10-90 N-Term) (STJ94595)

STJ94595

GENERAL INFORMATION

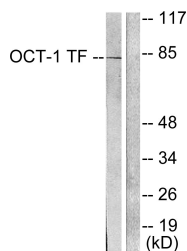
Product Type	Primary antibodies
Short Description	Rabbit polyclonal antibody anti-Pou Domain-Class 2-Transcription Factor 1 (10-90 N-Term) is suitable for use in Western Blot, Immunohistochemistry, Immunofluorescence and ELISA research applications.
Applications	WB, IHC-P, IF-P, ELISA
Host/Source	Rabbit
Reactivity	Human, Mouse

PRODUCT PROPERTIES

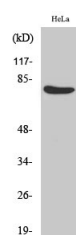
Clonality	Polyclonal
Clone ID	
Concentration	1 mg/mL
Conjugation	Unconjugated
Purification	The antibody was affinity-purified from rabbit anti-serum by affinity-chromatography.
Dilution Range	WB 1:500-1:2000 IHC 1:100-1:300 ELISA 1:5000
Formulation	PBS, 50% Glycerol, 0.5% BSA and 0.02% Sodium Azide.
Isotype	IgG
Storage Instruction	Store at -20°C for up to 1 year from the date of receipt, and avoid repeat freeze-thaw cycles.

TARGET INFORMATION

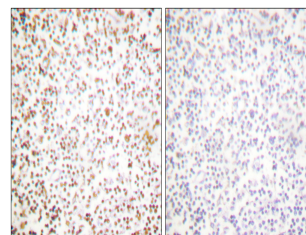
Gene ID	5451
Gene Symbol	POU2F1
Uniprot ID	PO2F1_HUMAN
Immunogen	The antiserum was produced against synthesized peptide derived from human OCT1 at amino acid range 41-90
Immunogen Region	10-90 N-Term
Specificity	POU2F1 polyclonal antibody (Pou Domain-Class 2-Transcription Factor 1) binds to endogenous Pou Domain-Class 2-Transcription Factor 1 at the amino acid region 10-90 N-Term.
Immunogen Sequence	



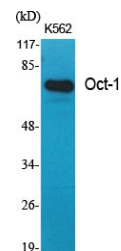
Western blot analysis of lysates from HeLa cells, using OCT1 Antibody. The lane on the right is blocked with the synthesized peptide.



Western blot analysis of HeLa cells using Oct-1 Polyclonal Antibody diluted at 1: 1000 cells nucleus extracted by Minute TM Cytoplasmic and Nuclear Fractionation kit (SC-003, Inventibiotec, MN, USA).



Immunohistochemistry analysis of paraffin-embedded human lymph node tissue, using OCT1 Antibody. The picture on the right is blocked with the synthesized peptide.



Western blot analysis of various cells using Oct-1 Polyclonal Antibody diluted at 1: 1000 cells nucleus extracted by Minute TM Cytoplasmic and Nuclear Fractionation kit (SC-003, Inventibiotec, MN, USA).

This product is suitable for in-vitro studies under the RESEARCH USE ONLY [RUO] licence. This product must not be used as for diagnostic or other medical purposes.
St John's Laboratory Ltd, Knowledge Dock Business Centre, University Way, London, E16 2RD | Tel: 0208 223 3081