

Anti-OCRL antibody (Internal) (STJ94593)

STJ94593

GENERAL INFORMATION

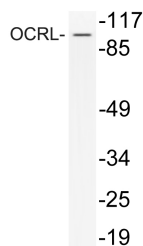
Product Type	Primary antibodies
Short Description	Rabbit polyclonal antibody anti-Inositol Polyphosphate 5-Phosphatase Ocr1 (Internal) is suitable for use in Western Blot and ELISA research applications.
Applications	WB, ELISA
Host/Source	Rabbit
Reactivity	Human, Mouse

PRODUCT PROPERTIES

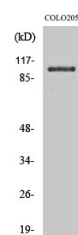
Clonality	Polyclonal
Clone ID	
Concentration	1 mg/mL
Conjugation	Unconjugated
Purification	The antibody was affinity-purified from rabbit anti-serum by affinity-chromatography.
Dilution Range	WB 1:500-1:2000 ELISA 1:10000
Formulation	PBS, 50% Glycerol, 0.5% BSA and 0.02% Sodium Azide.
Isotype	IgG
Storage	Store at -20°C for up to 1 year from the date of receipt, and avoid repeat freeze-thaw cycles.
Instruction	

TARGET INFORMATION

Gene ID	4952
Gene Symbol	OCRL
Uniprot ID	OCRL_HUMAN
Immunogen	The antiserum was produced against synthesized peptide derived from human OCRL at amino acid range 150-199
Immunogen Region	Internal
Specificity	OCRL polyclonal antibody (Inositol Polyphosphate 5-Phosphatase Ocr1) binds to endogenous Inositol Polyphosphate 5-Phosphatase Ocr1 at the amino acid region Internal.
Immunogen Sequence	



Western blot analysis of lysate from COLO205 cells treated with Forskolin, using OCRL antibody.



Western blot analysis of various cells using OCRL Polyclonal Antibody

This product is suitable for in-vitro studies under the RESEARCH USE ONLY [RUO] licence. This product must not be used as for diagnostic or other medical purposes.
St John's Laboratory Ltd, Knowledge Dock Business Centre, University Way, London, E16 2RD | Tel: 0208 223 3081