

Anti-OPCML antibody (Internal) (STJ94590)

STJ94590

GENERAL INFORMATION

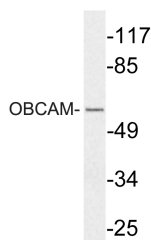
Product Type	Primary antibodies
Short Description	Rabbit polyclonal antibody anti-Opioid-Binding Protein/Cell Adhesion Molecule (Internal) is suitable for use in Western Blot and ELISA research applications.
Applications	WB, ELISA
Host/Source	Rabbit
Reactivity	Human, Mouse, Rat, Monkey

PRODUCT PROPERTIES

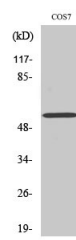
Clonality	Polyclonal
Clone ID	
Concentration	1 mg/mL
Conjugation	Unconjugated
Purification	The antibody was affinity-purified from rabbit anti-serum by affinity-chromatography.
Dilution Range	WB 1:500-1:2000 ELISA 1:10000
Formulation	PBS, 50% Glycerol, 0.5% BSA and 0.02% Sodium Azide.
Isotype	IgG
Storage	Store at -20°C for up to 1 year from the date of receipt, and avoid repeat freeze-thaw cycles.
Instruction	

TARGET INFORMATION

Gene ID	4978
Gene Symbol	OPCML
Uniprot ID	OPCML_HUMAN
Immunogen	The antiserum was produced against synthesized peptide derived from human OBCAM at amino acid range 152-201
Immunogen Region	Internal
Specificity	OPCML polyclonal antibody (Opioid-Binding Protein/Cell Adhesion Molecule) binds to endogenous Opioid-Binding Protein/Cell Adhesion Molecule at the amino acid region Internal.
Immunogen Sequence	



Western blot analysis of lysate from COS7 cells, using OBCAM antibody.



Western blot analysis of various cells using OBCAM Polyclonal Antibody diluted at 1: 1000

This product is suitable for in-vitro studies under the RESEARCH USE ONLY [RUO] licence. This product must not be used as for diagnostic or other medical purposes.
St John's Laboratory Ltd, Knowledge Dock Business Centre, University Way, London, E16 2RD | Tel: 0208 223 3081