

## Anti-CDH11 antibody (390-470 Internal) (STJ94589)

STJ94589

### GENERAL INFORMATION

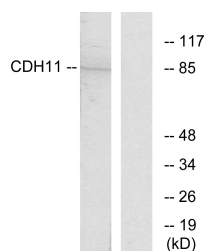
<b>Product Type</b>	Primary antibodies
<b>Short Description</b>	Rabbit polyclonal antibody anti-Cadherin-11 (390-470 Internal) is suitable for use in Western Blot and ELISA research applications.
<b>Applications</b>	WB, ELISA
<b>Host/Source</b>	Rabbit
<b>Reactivity</b>	Human, Mouse

### PRODUCT PROPERTIES

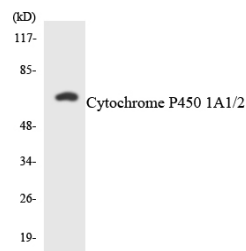
<b>Clonality</b>	Polyclonal
<b>Clone ID</b>	
<b>Concentration</b>	1 mg/mL
<b>Conjugation</b>	Unconjugated
<b>Purification</b>	The antibody was affinity-purified from rabbit anti-serum by affinity-chromatography.
<b>Dilution Range</b>	WB 1:500-1:2000 ELISA 1:20000
<b>Formulation</b>	PBS, 50% Glycerol, 0.5% BSA and 0.02% Sodium Azide.
<b>Isotype</b>	IgG
<b>Storage Instruction</b>	Store at -20°C for up to 1 year from the date of receipt, and avoid repeat freeze-thaw cycles.

### TARGET INFORMATION

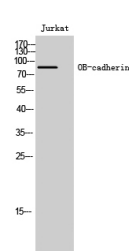
<b>Gene ID</b>	1009
<b>Gene Symbol</b>	CDH11
<b>Uniprot ID</b>	CAD11_HUMAN
<b>Immunogen</b>	The antiserum was produced against synthesized peptide derived from human CDH11 at amino acid range 421-470
<b>Immunogen Region</b>	390-470 Internal
<b>Specificity</b>	CDH11 polyclonal antibody (Cadherin-11) binds to endogenous Cadherin-11 at the amino acid region 390-470 Internal.
<b>Immunogen Sequence</b>	



Western blot analysis of lysates from Jurkat cells, using CDH11 Antibody. The lane on the right is blocked with the synthesized peptide.



Western blot analysis of the lysates from HeLa cells using Cytochrome P450 1A1/2 antibody.



Western blot analysis of Jurkat cells using OB-cadherin Polyclonal Antibody

This product is suitable for in-vitro studies under the RESEARCH USE ONLY [RUO] licence. This product must not be used as for diagnostic or other medical purposes.  
St John's Laboratory Ltd, Knowledge Dock Business Centre, University Way, London, E16 2RD | Tel: 0208 223 3081