

Anti-NUP160 antibody (370-450 Internal) (STJ94576)

STJ94576

GENERAL INFORMATION

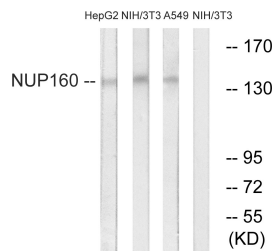
Product Type	Primary antibodies
Short Description	Rabbit polyclonal antibody anti-Nuclear Pore Complex Protein Nup160 (370-450 Internal) is suitable for use in Western Blot and ELISA research applications.
Applications	WB, ELISA
Host/Source	Rabbit
Reactivity	Human, Mouse

PRODUCT PROPERTIES

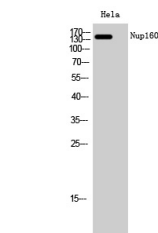
Clonality	Polyclonal
Clone ID	
Concentration	1 mg/mL
Conjugation	Unconjugated
Purification	The antibody was affinity-purified from rabbit anti-serum by affinity-chromatography.
Dilution Range	WB 1:500-1:2000 ELISA 1:20000
Formulation	PBS, 50% Glycerol, 0.5% BSA and 0.02% Sodium Azide.
Isotype	IgG
Storage Instruction	Store at -20°C for up to 1 year from the date of receipt, and avoid repeat freeze-thaw cycles.

TARGET INFORMATION

Gene ID	23279
Gene Symbol	NUP160
Uniprot ID	NU160_HUMAN
Immunogen	The antiserum was produced against synthesized peptide derived from human NUP160 at amino acid range 392-441
Immunogen Region	370-450 Internal
Specificity	NUP160 polyclonal antibody (Nuclear Pore Complex Protein Nup160) binds to endogenous Nuclear Pore Complex Protein Nup160 at the amino acid region 370-450 Internal.
Immunogen Sequence	



Western blot analysis of lysates from NIH/3T3, A549, and HepG2 cells, using NUP160 Antibody. The lane on the right is blocked with the synthesized peptide.



Western blot analysis of HeLa cells using Nup160 Polyclonal Antibody diluted at 1:2000. Cells nucleus extracted by Minute™ Cytoplasmic and Nuclear Fractionation kit (SC-003, Inventibiotech, MN, USA).