

Anti-NUDC antibody (270-350) (STJ94574)

STJ94574

GENERAL INFORMATION

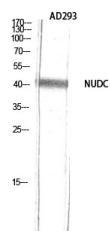
Product Type	Primary antibodies
Short Description	Rabbit polyclonal antibody anti-Nuclear Migration Protein Nudc (270-350) is suitable for use in Western Blot, Immunohistochemistry, Immunofluorescence and ELISA research applications.
Applications	WB, IHC-P, IF-P, ELISA
Host/Source	Rabbit
Reactivity	Human, Mouse, Rat

PRODUCT PROPERTIES

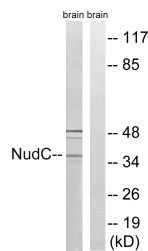
Clonality	Polyclonal
Clone ID	
Concentration	1 mg/mL
Conjugation	Unconjugated
Purification	The antibody was affinity-purified from rabbit anti-serum by affinity-chromatography.
Dilution Range	WB 1:500-1:2000 IHC 1:100-1:300 ELISA 1:10000
Formulation	PBS, 50% Glycerol, 0.5% BSA and 0.02% Sodium Azide.
Isotype	IgG
Storage Instruction	Store at -20°C for up to 1 year from the date of receipt, and avoid repeat freeze-thaw cycles.

TARGET INFORMATION

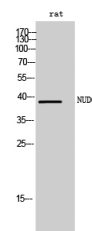
Gene ID	10726
Gene Symbol	NUDC
Uniprot ID	NUDC_HUMAN
Immunogen	The antiserum was produced against synthesized peptide derived from human NudC at amino acid range 282-331
Immunogen Region	270-350
Specificity	NUDC polyclonal antibody (Nuclear Migration Protein Nudc) binds to endogenous Nuclear Migration Protein Nudc at the amino acid region 270-350.
Immunogen Sequence	



Western blot analysis of AD293 using NUDC Polyclonal Antibody diluted at 1: 2000



Western blot analysis of lysates from rat brain cells, using NudC Antibody. The lane on the right is blocked with the synthesized peptide.



Western blot analysis of rat cells using NUDC Polyclonal Antibody diluted at 1: 2000

This product is suitable for in-vitro studies under the RESEARCH USE ONLY [RUO] licence. This product must not be used as for diagnostic or other medical purposes.
St John's Laboratory Ltd, Knowledge Dock Business Centre, University Way, London, E16 2RD | Tel: 0208 223 3081