

Anti-NUCKS1 antibody (40-120 Internal) (STJ94572)

STJ94572

GENERAL INFORMATION

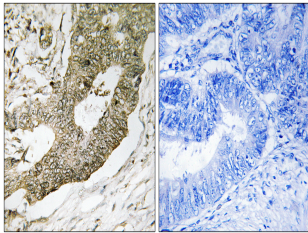
Product Type	Primary antibodies
Short Description	Rabbit polyclonal antibody anti-Nuclear Ubiquitous Casein And Cyclin-Dependent Kinase Substrate 1 (40-120 Internal) is suitable for use in Immunohistochemistry, Immunofluorescence and ELISA research applications.
Applications	IHC-P, IF-P, ELISA
Host/Source	Rabbit
Reactivity	Human, Mouse, Rat

PRODUCT PROPERTIES

Clonality	Polyclonal
Clone ID	
Concentration	1 mg/mL
Conjugation	Unconjugated
Purification	The antibody was affinity-purified from rabbit anti-serum by affinity-chromatography.
Dilution	IHC 1:100-1:300
Range	ELISA 1:10000
Formulation	PBS, 50% Glycerol, 0.5% BSA and 0.02% Sodium Azide.
Isotype	IgG
Storage	Store at -20°C for up to 1 year from the date of receipt, and avoid repeat freeze-thaw cycles.
Instruction	

TARGET INFORMATION

Gene ID	64710
Gene Symbol	NUCKS1
Uniprot ID	NUCKS_HUMAN
Immunogen	The antiserum was produced against synthesized peptide derived from human NUCKS1 at amino acid range 28-77
Immunogen Region	40-120 Internal
Specificity	NUCKS1 polyclonal antibody (Nuclear Ubiquitous Casein And Cyclin-Dependent Kinase Substrate 1) binds to endogenous Nuclear Ubiquitous Casein And Cyclin-Dependent Kinase Substrate 1 at the amino acid region 40-120 Internal.
Immunogen Sequence	



Immunohistochemistry analysis of paraffin-embedded human colon carcinoma tissue using NUCKS1 Antibody. The picture on the right is blocked with the synthesized peptide.