

Anti-SLC6A16 antibody (210-290 Internal) (STJ94570)

STJ94570

GENERAL INFORMATION

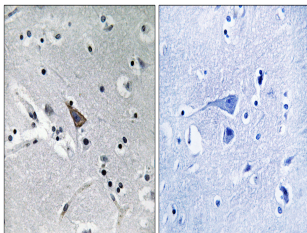
Product Type	Primary antibodies
Short Description	Rabbit polyclonal antibody anti-Orphan Sodium-And Chloride-Dependent Neurotransmitter Transporter Ntt5 (210-290 Internal) is suitable for use in Immunohistochemistry, Immunofluorescence and ELISA research applications.
Applications	IHC-P, IF-P, ELISA
Host/Source	Rabbit
Reactivity	Human, Rat, Mouse

PRODUCT PROPERTIES

Clonality	Polyclonal
Clone ID	
Concentration	1 mg/mL
Conjugation	Unconjugated
Purification	The antibody was affinity-purified from rabbit anti-serum by affinity-chromatography.
Dilution	IHC 1:100-1:300
Range	ELISA 1:40000
Formulation	PBS, 50% Glycerol, 0.5% BSA and 0.02% Sodium Azide.
Isotype	IgG
Storage	Store at-20°C for up to 1 year from the date of receipt, and avoid repeat freeze-thaw cycles.
Instruction	

TARGET INFORMATION

Gene ID	28968
Gene Symbol	SLC6A16
Uniprot ID	S6A16_HUMAN
Immunogen	The antiserum was produced against synthesized peptide derived from human SLC6A16 at amino acid range 233-282
Immunogen Region	210-290 Internal
Specificity	SLC6A16 polyclonal antibody (Orphan Sodium-And Chloride-Dependent Neurotransmitter Transporter Ntt5) binds to endogenous Orphan Sodium-And Chloride-Dependent Neurotransmitter Transporter Ntt5 at the amino acid region 210-290 Internal.
Immunogen Sequence	



Immunohistochemistry analysis of paraffin-embedded human brain, using SLC6A16 Antibody. The picture on the right is blocked with the synthesized peptide.