

Anti-NTPCR antibody (110-190 C-Term) (STJ94567)

STJ94567

GENERAL INFORMATION

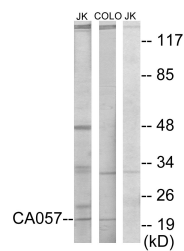
Product Type	Primary antibodies
Short Description	Rabbit polyclonal antibody anti-Cancer-Related Nucleoside-Triphosphatase (110-190 C-Term) is suitable for use in Western Blot, Immunohistochemistry, Immunofluorescence and ELISA research applications.
Applications	WB, IHC-P, IF-P, ELISA
Host/Source	Rabbit
Reactivity	Human, Rat, Mouse

PRODUCT PROPERTIES

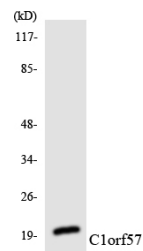
Clonality	Polyclonal
Clone ID	
Concentration	1 mg/mL
Conjugation	Unconjugated
Purification	The antibody was affinity-purified from rabbit anti-serum by affinity-chromatography.
Dilution Range	WB 1:500-1:2000 IHC 1:100-1:300 ELISA 1:40000
Formulation	PBS, 50% Glycerol, 0.5% BSA and 0.02% Sodium Azide.
Isotype	IgG
Storage Instruction	Store at -20°C for up to 1 year from the date of receipt, and avoid repeat freeze-thaw cycles.

TARGET INFORMATION

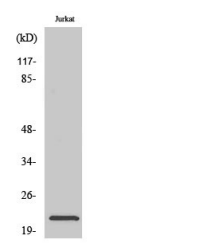
Gene ID	84284
Gene Symbol	NTPCR
Uniprot ID	NTPCR_HUMAN
Immunogen	The antiserum was produced against synthesized peptide derived from human C1orf57 at amino acid range 141-190
Immunogen Region	110-190 C-Term
Specificity	NTPCR polyclonal antibody (Cancer-Related Nucleoside-Triphosphatase) binds to endogenous Cancer-Related Nucleoside-Triphosphatase at the amino acid region 110-190 C-Term.
Immunogen Sequence	



Western blot analysis of lysates from Jurkat and COLO205 cells, using C1orf57 Antibody. The lane on the right is blocked with the synthesized peptide.



Western blot analysis of the lysates from HUVEC cells using C1orf57 antibody.



Western blot analysis of various cells using NTPase Polyclonal Antibody.

This product is suitable for in-vitro studies under the RESEARCH USE ONLY [RUO] licence. This product must not be used as for diagnostic or other medical purposes.
St John's Laboratory Ltd, Knowledge Dock Business Centre, University Way, London, E16 2RD | Tel: 0208 223 3081