

## Anti-NUTF2 antibody (40-120 Internal) (STJ94566)

STJ94566

### GENERAL INFORMATION

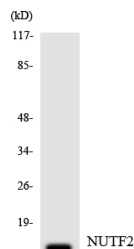
<b>Product Type</b>	Primary antibodies
<b>Short Description</b>	Rabbit polyclonal antibody anti-Nuclear Transport Factor 2 (40-120 Internal) is suitable for use in Western Blot, Immunohistochemistry, Immunofluorescence and ELISA research applications.
<b>Applications</b>	WB, IHC-P, IF-P, ELISA
<b>Host/Source</b>	Rabbit
<b>Reactivity</b>	Human, Mouse, Rat

### PRODUCT PROPERTIES

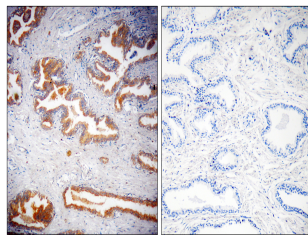
<b>Clonality</b>	Polyclonal
<b>Clone ID</b>	
<b>Concentration</b>	1 mg/mL
<b>Conjugation</b>	Unconjugated
<b>Purification</b>	The antibody was affinity-purified from rabbit anti-serum by affinity-chromatography.
<b>Dilution Range</b>	WB 1:500-1:2000 IHC 1:100-1:300 ELISA 1:20000
<b>Formulation</b>	PBS, 50% Glycerol, 0.5% BSA and 0.02% Sodium Azide.
<b>Isotype</b>	IgG
<b>Storage Instruction</b>	Store at -20°C for up to 1 year from the date of receipt, and avoid repeat freeze-thaw cycles.

### TARGET INFORMATION

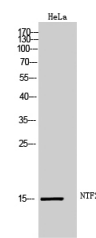
<b>Gene ID</b>	10204
<b>Gene Symbol</b>	NUTF2
<b>Uniprot ID</b>	NTF2_HUMAN
<b>Immunogen</b>	The antiserum was produced against synthesized peptide derived from human NUTF2 at amino acid range 67-116
<b>Immunogen Region</b>	40-120 Internal
<b>Specificity</b>	NUTF2 polyclonal antibody (Nuclear Transport Factor 2) binds to endogenous Nuclear Transport Factor 2 at the amino acid region 40-120 Internal.
<b>Immunogen Sequence</b>	



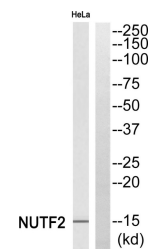
Western blot analysis of the lysates from HT-29 cells using NUTF2 antibody.



Immunohistochemistry analysis of paraffin-embedded human prostate, using NUTF2 Antibody. The lane on the right is blocked with the NUTF2 peptide.



Western blot analysis of HeLa cells using NTF2 Polyclonal Antibody



Western blot analysis of NUTF2 Antibody. The lane on the right is blocked with the NUTF2 peptide.