

## Anti-NT5C1A antibody (120-200 Internal) (STJ94563)

STJ94563

### GENERAL INFORMATION

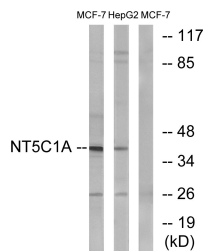
<b>Product Type</b>	Primary antibodies
<b>Short Description</b>	Rabbit polyclonal antibody anti-Cytosolic 5 Nucleotidase 1a (120-200 Internal) is suitable for use in Western Blot, Immunofluorescence, Immunocytochemistry and ELISA research applications.
<b>Applications</b>	WB, IF, ICC, ELISA
<b>Host/Source</b>	Rabbit
<b>Reactivity</b>	Human, Mouse

### PRODUCT PROPERTIES

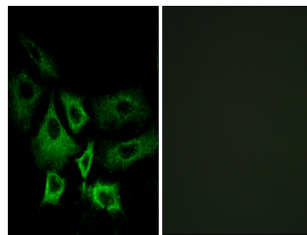
<b>Clonality</b>	Polyclonal
<b>Clone ID</b>	
<b>Concentration</b>	1 mg/mL
<b>Conjugation</b>	Unconjugated
<b>Purification</b>	The antibody was affinity-purified from rabbit anti-serum by affinity-chromatography.
<b>Dilution Range</b>	WB 1:500-1:2000 IF 1:200-1:1000 ELISA 1:20000
<b>Formulation</b>	PBS, 50% Glycerol, 0.5% BSA and 0.02% Sodium Azide.
<b>Isotype</b>	IgG
<b>Storage Instruction</b>	Store at -20°C for up to 1 year from the date of receipt, and avoid repeat freeze-thaw cycles.

### TARGET INFORMATION

<b>Gene ID</b>	84618
<b>Gene Symbol</b>	NT5C1A
<b>Uniprot ID</b>	5NT1A_HUMAN
<b>Immunogen</b>	The antiserum was produced against synthesized peptide derived from human NT5C1A at amino acid range 151-200
<b>Immunogen Region</b>	120-200 Internal
<b>Specificity</b>	NT5C1A polyclonal antibody (Cytosolic 5 NA-Nucleotidase 1a) binds to endogenous Cytosolic 5 NA-Nucleotidase 1a at the amino acid region 120-200 Internal.
<b>Immunogen Sequence</b>	



Western blot analysis of lysates from MCF-7 and HepG2 cells, using NT5C1A Antibody. The lane on the right is blocked with the synthesized peptide.



Immunofluorescence analysis of A549 cells, using NT5C1A Antibody. The picture on the right is blocked with the synthesized peptide.

This product is suitable for in-vitro studies under the RESEARCH USE ONLY [RUO] licence. This product must not be used as for diagnostic or other medical purposes.  
St John's Laboratory Ltd, Knowledge Dock Business Centre, University Way, London, E16 2RD | Tel: 0208 223 3081