

Anti-NRL antibody (10-90 N-Term) (STJ94558)

STJ94558

GENERAL INFORMATION

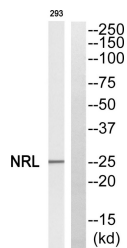
Product Type	Primary antibodies
Short Description	Rabbit polyclonal antibody anti-Neural Retina-Specific Leucine Zipper Protein (10-90 N-Term) is suitable for use in Western Blot and ELISA research applications.
Applications	WB, ELISA
Host/Source	Rabbit
Reactivity	Human, Mouse

PRODUCT PROPERTIES

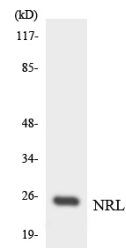
Clonality	Polyclonal
Clone ID	
Concentration	1 mg/mL
Conjugation	Unconjugated
Purification	The antibody was affinity-purified from rabbit anti-serum by affinity-chromatography.
Dilution Range	WB 1:500-1:2000 ELISA 1:10000
Formulation	PBS, 50% Glycerol, 0.5% BSA and 0.02% Sodium Azide.
Isotype	IgG
Storage	Store at -20°C for up to 1 year from the date of receipt, and avoid repeat freeze-thaw cycles.
Instruction	

TARGET INFORMATION

Gene ID	4901
Gene Symbol	NRL
Uniprot ID	NRL_HUMAN
Immunogen	The antiserum was produced against synthesized peptide derived from human NRL at amino acid range 19-68
Immunogen Region	10-90 N-Term
Specificity	NRL polyclonal antibody (Neural Retina-Specific Leucine Zipper Protein) binds to endogenous Neural Retina-Specific Leucine Zipper Protein at the amino acid region 10-90 N-Term.
Immunogen Sequence	



Western blot analysis of NRL Antibody. The lane on the right is blocked with the NRL peptide.



Western blot analysis of the lysates from HUVEC cells using NRL antibody.



Western blot analysis of various cells using Nrl Polyclonal Antibody cells nucleus extracted by Minute TM Cytoplasmic and Nuclear Fractionation kit (SC-003, Inventibiotech, MN, USA).

This product is suitable for in-vitro studies under the RESEARCH USE ONLY [RUO] licence. This product must not be used as for diagnostic or other medical purposes.
St John's Laboratory Ltd, Knowledge Dock Business Centre, University Way, London, E16 2RD | Tel: 0208 223 3081