

Anti-NFE2L3 antibody (460-540 Internal) (STJ94555)

STJ94555

GENERAL INFORMATION

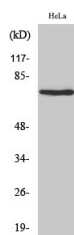
Product Type	Primary antibodies
Short Description	Rabbit polyclonal antibody anti-Nuclear Factor Erythroid 2-Related Factor 3 (460-540 Internal) is suitable for use in Western Blot and ELISA research applications.
Applications	WB, ELISA
Host/Source	Rabbit
Reactivity	Human, Rat, Mouse

PRODUCT PROPERTIES

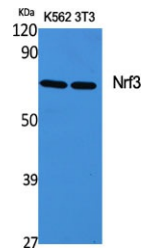
Clonality	Polyclonal
Clone ID	
Concentration	1 mg/mL
Conjugation	Unconjugated
Purification	The antibody was affinity-purified from rabbit anti-serum by affinity-chromatography.
Dilution Range	WB 1:500-1:2000 ELISA 1:10000
Formulation	PBS, 50% Glycerol, 0.5% BSA and 0.02% Sodium Azide.
Isotype	IgG
Storage	Store at -20°C for up to 1 year from the date of receipt, and avoid repeat freeze-thaw cycles.
Instruction	

TARGET INFORMATION

Gene ID	9603
Gene Symbol	NFE2L3
Uniprot ID	NF2L3_HUMAN
Immunogen	The antiserum was produced against synthesized peptide derived from human NFE2L3 at amino acid range 491-540
Immunogen Region	460-540 Internal
Specificity	NFE2L3 polyclonal antibody (Nuclear Factor Erythroid 2-Related Factor 3) binds to endogenous Nuclear Factor Erythroid 2-Related Factor 3 at the amino acid region 460-540 Internal.
Immunogen Sequence	



Western blot analysis of HeLa cells using Nrf3 Polyclonal Antibody cells nucleus extracted by Minute™ Cytoplasmic and Nuclear Fractionation kit (SC-003, Inventibiotech, MN, USA).



Western blot analysis of various cells using Nrf3 Polyclonal Antibody cells nucleus extracted by Minute™ Cytoplasmic and Nuclear Fractionation kit (SC-003, Inventibiotech, MN, USA).

This product is suitable for in-vitro studies under the RESEARCH USE ONLY [RUO] licence. This product must not be used as for diagnostic or other medical purposes.
St John's Laboratory Ltd, Knowledge Dock Business Centre, University Way, London, E16 2RD | Tel: 0208 223 3081