

## Anti-NFE2L2 antibody (530-610 C-Term) (STJ94554)

STJ94554

### GENERAL INFORMATION

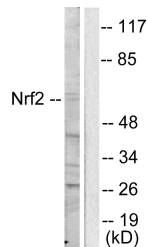
<b>Product Type</b>	Primary antibodies
<b>Short Description</b>	Rabbit polyclonal antibody anti-Nuclear Factor Erythroid 2-Related Factor 2 (530-610 C-Term) is suitable for use in Western Blot, Immunohistochemistry, Immunofluorescence, Immunocytochemistry and ELISA research applications.
<b>Applications</b>	WB, IHC-P, IF, ICC, ELISA
<b>Host/Source</b>	Rabbit
<b>Reactivity</b>	Human, Mouse, Rat

### PRODUCT PROPERTIES

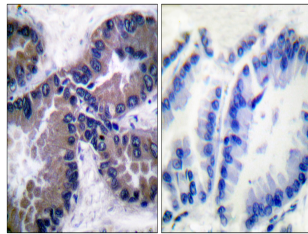
<b>Clonality</b>	Polyclonal
<b>Clone ID</b>	
<b>Concentration</b>	1 mg/mL
<b>Conjugation</b>	Unconjugated
<b>Purification</b>	The antibody was affinity-purified from rabbit anti-serum by affinity-chromatography.
<b>Dilution Range</b>	WB 1:500-1:2000 IHC 1:100-1:300 IF 1:200-1:1000 ELISA 1:40000
<b>Formulation</b>	PBS, 50% Glycerol, 0.5% BSA and 0.02% Sodium Azide.
<b>Isotype</b>	IgG
<b>Storage Instruction</b>	Store at -20°C for up to 1 year from the date of receipt, and avoid repeat freeze-thaw cycles.

### TARGET INFORMATION

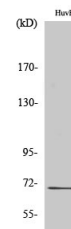
<b>Gene ID</b>	4780
<b>Gene Symbol</b>	NFE2L2
<b>Uniprot ID</b>	NF2L2_HUMAN
<b>Immunogen</b>	The antiserum was produced against synthesized peptide derived from human Nrf2 at amino acid range 556-605
<b>Immunogen Region</b>	530-610 C-Term
<b>Specificity</b>	NFE2L2 polyclonal antibody (Nuclear Factor Erythroid 2-Related Factor 2) binds to endogenous Nuclear Factor Erythroid 2-Related Factor 2 at the amino acid region 530-610 C-Term.
<b>Immunogen Sequence</b>	



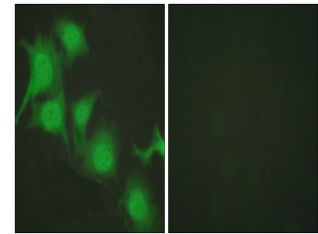
Western blot analysis of lysates from HUVEC cells, using Nrf2 Antibody. The lane on the right is blocked with the synthesized peptide.



Immunohistochemistry analysis of paraffin-embedded human lung carcinoma tissue, using Nrf2 Antibody. The picture on the right is blocked with the synthesized peptide.



Western blot analysis of HUVEC cells using Nrf2 Polyclonal Antibody diluted at 1: 1000



Immunofluorescence analysis of HUVEC cells, using Nrf2 Antibody. The picture on the right is blocked with the synthesized peptide.

This product is suitable for in-vitro studies under the RESEARCH USE ONLY [RUO] licence. This product must not be used as for diagnostic or other medical purposes.  
St John's Laboratory Ltd, Knowledge Dock Business Centre, University Way, London, E16 2RD | Tel: 0208 223 3081