

Anti-NRF1 antibody (190-270 Internal) (STJ94553)

STJ94553

GENERAL INFORMATION

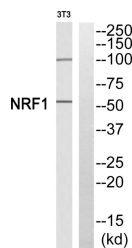
Product Type	Primary antibodies
Short Description	Rabbit polyclonal antibody anti-Nuclear Respiratory Factor 1 (190-270 Internal) is suitable for use in Western Blot and ELISA research applications.
Applications	WB, ELISA
Host/Source	Rabbit
Reactivity	Human, Mouse, Rat

PRODUCT PROPERTIES

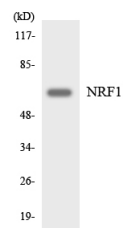
Clonality	Polyclonal
Clone ID	
Concentration	1 mg/mL
Conjugation	Unconjugated
Purification	The antibody was affinity-purified from rabbit anti-serum by affinity-chromatography.
Dilution Range	WB 1:500-1:2000 ELISA 1:5000
Formulation	PBS, 50% Glycerol, 0.5% BSA and 0.02% Sodium Azide.
Isotype	IgG
Storage	Store at -20°C for up to 1 year from the date of receipt, and avoid repeat freeze-thaw cycles.
Instruction	

TARGET INFORMATION

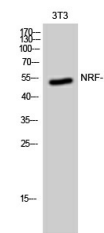
Gene ID	4899
Gene Symbol	NRF1
Uniprot ID	NRF1_HUMAN
Immunogen	The antiserum was produced against synthesized peptide derived from human NRF1 at amino acid range 221-270
Immunogen Region	190-270 Internal
Specificity	NRF1 polyclonal antibody (Nuclear Respiratory Factor 1) binds to endogenous Nuclear Respiratory Factor 1 at the amino acid region 190-270 Internal.
Immunogen Sequence	



Western blot analysis of NRF1 Antibody. The lane on the right is blocked with the NRF1 peptide.



Western blot analysis of the lysates from HeLa cells using NRF1 antibody.



Western blot analysis of 3T3 cells using NRF-1 Polyclonal Antibody cells nucleus extracted by Minute™ Cytoplasmic and Nuclear Fractionation kit (SC-003, Inventibiotech, MN, USA).