

Anti-NRBF2 antibody (110-190 Internal) (STJ94552)

STJ94552

GENERAL INFORMATION

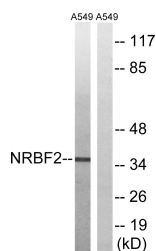
Product Type	Primary antibodies
Short Description	Rabbit polyclonal antibody anti-Nuclear Receptor-Binding Factor 2 (110-190 Internal) is suitable for use in Western Blot and ELISA research applications.
Applications	WB, ELISA
Host/Source	Rabbit
Reactivity	Human, Mouse, Rat

PRODUCT PROPERTIES

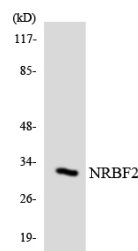
Clonality	Polyclonal
Clone ID	
Concentration	1 mg/mL
Conjugation	Unconjugated
Purification	The antibody was affinity-purified from rabbit anti-serum by affinity-chromatography.
Dilution Range	WB 1:500-1:2000 ELISA 1:20000
Formulation	PBS, 50% Glycerol, 0.5% BSA and 0.02% Sodium Azide.
Isotype	IgG
Storage Instruction	Store at -20°C for up to 1 year from the date of receipt, and avoid repeat freeze-thaw cycles.

TARGET INFORMATION

Gene ID	29982
Gene Symbol	NRBF2
Uniprot ID	NRBF2_HUMAN
Immunogen	The antiserum was produced against synthesized peptide derived from human NRBF2 at amino acid range 140-189
Immunogen Region	110-190 Internal
Specificity	NRBF2 polyclonal antibody (Nuclear Receptor-Binding Factor 2) binds to endogenous Nuclear Receptor-Binding Factor 2 at the amino acid region 110-190 Internal.
Immunogen Sequence	



Western blot analysis of lysates from A549 cells, using NRBF2 Antibody. The lane on the right is blocked with the synthesized peptide.



Western blot analysis of the lysates from RAW264.7 cells using NRBF2 antibody.



Western blot analysis of various cells using NRBF2 Polyclonal Antibody

This product is suitable for in-vitro studies under the RESEARCH USE ONLY [RUO] licence. This product must not be used as for diagnostic or other medical purposes.
St John's Laboratory Ltd, Knowledge Dock Business Centre, University Way, London, E16 2RD | Tel: 0208 223 3081