

Anti-NPY2R antibody (10-90 N-Term) (STJ94549)

STJ94549

GENERAL INFORMATION

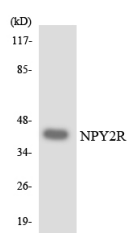
Product Type	Primary antibodies
Short Description	Rabbit polyclonal antibody anti-Neuropeptide Y Receptor Type 2 (10-90 N-Term) is suitable for use in Western Blot, Immunofluorescence, Immunocytochemistry and ELISA research applications.
Applications	WB, IF, ICC, ELISA
Host/Source	Rabbit
Reactivity	Human, Mouse, Rat

PRODUCT PROPERTIES

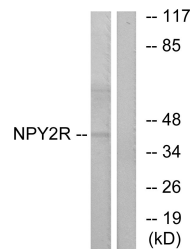
Clonality	Polyclonal
Clone ID	
Concentration	1 mg/mL
Conjugation	Unconjugated
Purification	The antibody was affinity-purified from rabbit anti-serum by affinity-chromatography.
Dilution Range	WB 1:500-1:2000 IF 1:200-1:1000 ELISA 1:5000
Formulation	PBS, 50% Glycerol, 0.5% BSA and 0.02% Sodium Azide.
Isotype	IgG
Storage Instruction	Store at -20°C for up to 1 year from the date of receipt, and avoid repeat freeze-thaw cycles.

TARGET INFORMATION

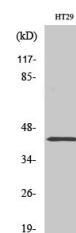
Gene ID	4887
Gene Symbol	NPY2R
Uniprot ID	NPY2R_HUMAN
Immunogen	The antiserum was produced against synthesized peptide derived from human NPY2R at amino acid range 1-50
Immunogen Region	10-90 N-Term
Specificity	NPY2R polyclonal antibody (Neuropeptide Y Receptor Type 2) binds to endogenous Neuropeptide Y Receptor Type 2 at the amino acid region 10-90 N-Term.
Immunogen Sequence	



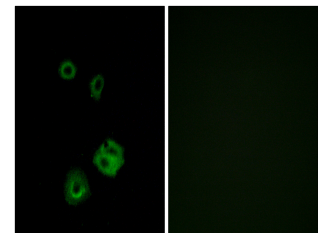
Western blot analysis of the lysates from HUVEC cells using NPY2R antibody.



Western blot analysis of lysates from HepG2 cells, using NPY2R Antibody. The lane on the right is blocked with the synthesized peptide.



Western blot analysis of HT29 cells using NPY2R-R Polyclonal Antibody diluted at 1: 500



Immunofluorescence analysis of A549 cells, using NPY2R Antibody. The picture on the right is blocked with the synthesized peptide.

This product is suitable for in-vitro studies under the RESEARCH USE ONLY [RUO] licence. This product must not be used as for diagnostic or other medical purposes.
St John's Laboratory Ltd, Knowledge Dock Business Centre, University Way, London, E16 2RD | Tel: 0208 223 3081